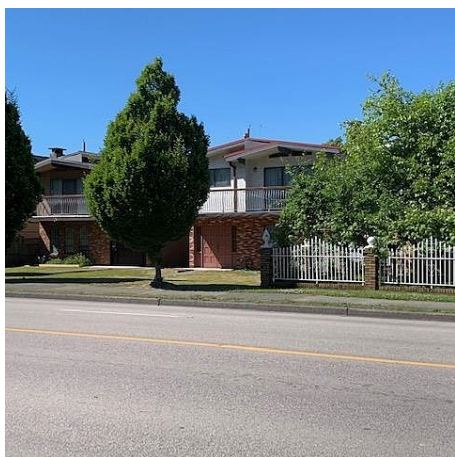


2137 E 1st Avenue, Vancouver

\$2,500,000



LAND ASSEMBLY. The Commercial Drive area is a culturally rich and authentic neighbourhood. Build homes for the people who enjoy quaint boutiques, an eclectic collection of restaurants, a vibrant live music and bar scene, dinner and dancing, theatres, coffee houses, specialty food stores and bakeries. The Drive - is one of the best and most colourful shopping, dining and nightlife districts you will find in the city. Possible 4-storey condo building, FSR 1.7, or stacked townhouse or row house, FSR 1.45.

KEY INFORMATION

MLS® R2622949

Residential Detached

Grandview Woodland

4 Bedrooms

3 Bathrooms

2,235 SF

4,026 SF Lot

FEATURES

Year Built: 1974

Listed By: Macdonald Realty

rennie