

# 1901 1250 Quayside Drive, New Westminster

\$1,749,900



Incredible renovation & panoramic river views - this Penthouse is truly one of a kind. The main floor boasts a two-floor open entryway w/ coffered ceiling & chandelier, impressive kitchen w/ 14' island/bar, double convection wall oven, side by side full fridge/freezer & induction cooktop. Spacious living & dining rooms w/ access to one of your 3 decks. Cozy family room w/ gas fireplace & access another deck overlooking the river. Primary bdrm completes the main floor w/ spa inspired ensuite, custom closets & office. Head up to the AC'd upper floor w/ 3 more bdrm's, den w/ gas fireplace & access to the 3rd deck & lrg bath w/ jetted tub and dbl sinks. Waterfront building steps to the Seawall & short stroll to Skytrain. A home you must see in person to entirely appreciate!

## KEY INFORMATION

MLS® R2623074

Residential Attached

Quay

4 Bedrooms

3 Bathrooms

3,206 SF

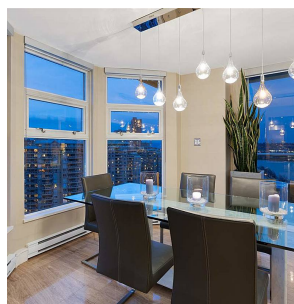
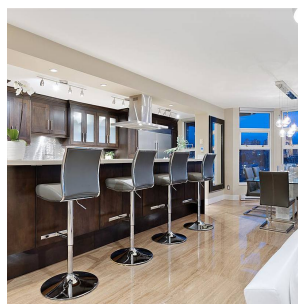
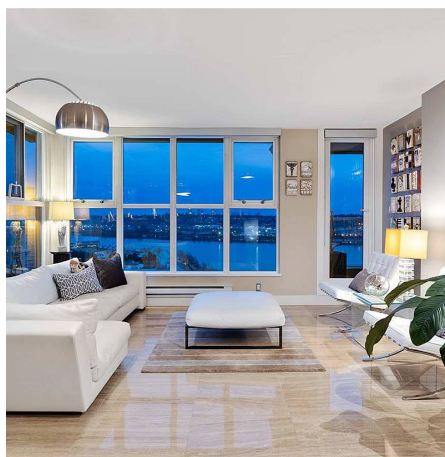
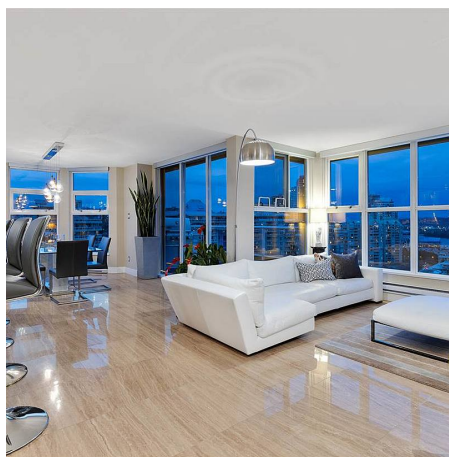
\$1,458.29 Maintenance Fees

## FEATURES

Year Built: 1989

Views: River and City

Listed By: Stilhavn Real Estate Services



rennie