

18b 6128 Patterson Avenue, Burnaby

\$755,000



Welcome to Grand Central Park Place! 2 spacious room-sizes BEDROOM & 2 Full BATHROOM with beautiful view of the North Shore Mountains and Central park from wraps-around balcony. Well maintained, situated on large resort-like building, offers entertainment room, indoor Swimming pool & Whirl Pool/Hot Tub,Sauna,Steam room and its own tennis court! Fully RAIN-SCREENED building, in excellent condition, replaced roof, plumbing, elevators redone, & recently painted. 2 side-by-side PARKING STALLS #206 I LOCKER #88. Minutes to Skytrain Station, Park, School, Metrotown, Library & Restaurants. Video: <https://www.youtube.com/watch?v=cMTZQt3NIeE>. Open House By the appointment on Saturday. October 30 from 1-3PM.

KEY INFORMATION

MLS® R2623230

Residential Attached

Metrotown

2 Bedrooms

2 Bathrooms

1,028 SF

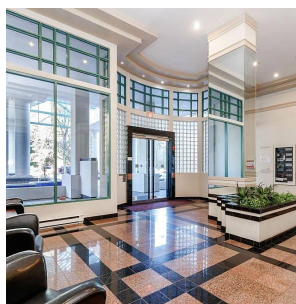
\$446.81 Maintenance Fees

FEATURES

Year Built: 1993

Views: N.Shore Mountain,Central Park

Listed By: Oakwyn Realty Ltd.



rennie