

# 4450 Atlee Avenue, Burnaby

\$2,290,000



European built, Spacious family home on a 6370 sq ft lot with lane access. Generous room sizes quality construction throughout, Well maintained since new. Excellent quiet location in Deer Lake Place, arguably Burnaby's best family neighborhood. Short, safe walk to Burnaby's highest rated public elementary school & newest secondary school. Close to bus, daycare, Highway 1 freeway, Deer Lake Park, swimming skating, tennis, soccer, rugby, BCIT & Metrotown. Marble tiled 2 storey entranc,1 foyer with curving staircase. Huge open kitchen/family room with updated cabinets, quailiz countertop & gas cooktop. Hardwood & tile, crown & base moldings, skylights. Downstairs Features a 3 bedroom self contained suite, plus games room and large storage room!

## KEY INFORMATION

MLS® R2623408

Residential Detached

Deer Lake Place

7 Bedrooms

5 Bathrooms

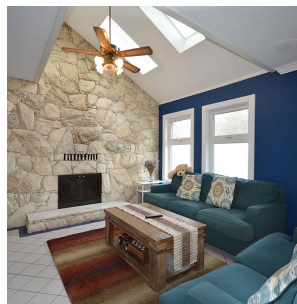
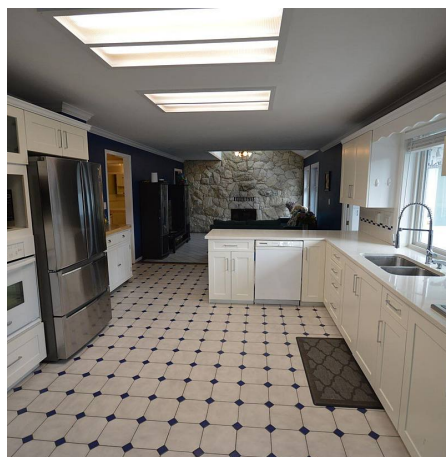
4,289 SF

6,370 SF Lot

## FEATURES

Year Built: 1988

Listed By: One Percent Realty Ltd.



rennie