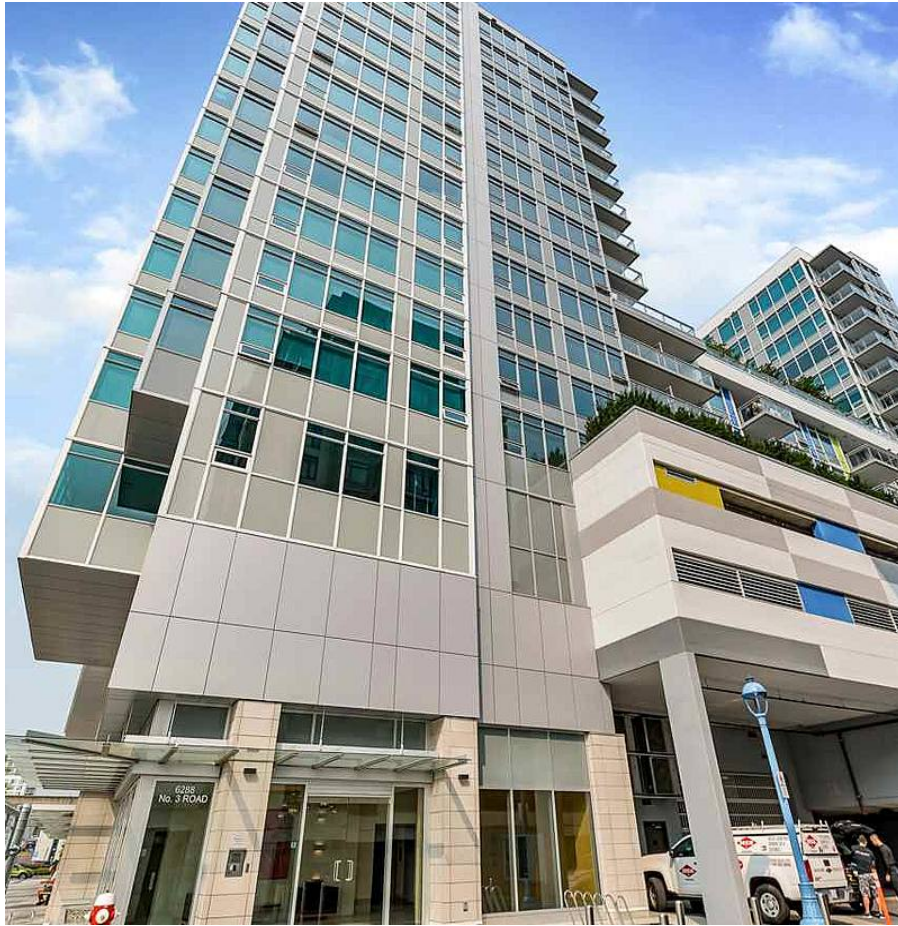


908 6288 No. 3 Road, Richmond

\$998,000



Central of Richmond, adjacent to the skytrain Station, steps to Richmond Centre mall, banks, restaurants and everything. This home features a functional layout with open concept kitchen, living & dining areas. Mint condition corner unit features over 1,000 Sqft of living area, bright with large windows, air conditioning, gas cook-top. Quality laminated flooring and much more. View to South and West. Great amenities includes gym, garden terrace, games/ meeting rooms, etc.

KEY INFORMATION

MLS® R2623929

Residential Attached

Brighthouse

2 Bedrooms

2 Bathrooms

1,079 SF

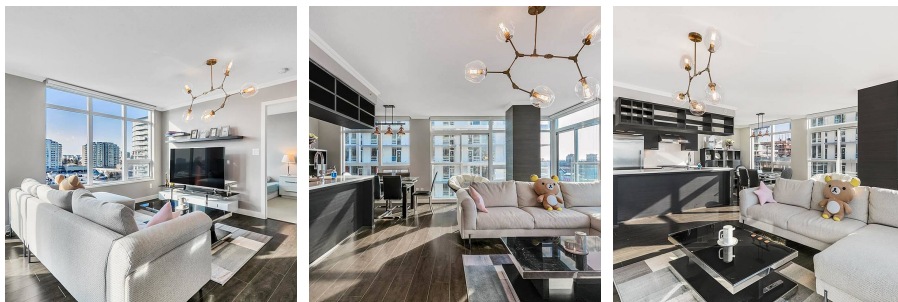
\$532.00 Maintenance Fees

FEATURES

Year Built: 2016

Views: CITY

Listed By: RE/MAX Crest Realty



rennie