

1902 10082 148 Street, Surrey

\$499,000



WOW!!! This 2 bedroom unit over 1,200 square feet is located on the South West side of the building. Stunning 270 degree Views of the City from all windows from the spacious living room. Newer appliances in the kitchen, private balcony and gas burning fireplace featured. Master bedroom with a 4 piece in-suite with 2 bedrooms, 2 full bathrooms, 1 underground parking space and bike parking. The Stanley features resort-style amenities incl. an outdoor pool, hot tub, tennis court, club house & exercise room. Bus stops, both levels of schools, Guildford Town Centre, Walmart, T&T & restaurants are walking distance with sky train & Hwy 1 just a short drive away. A MUST SEE !!!

KEY INFORMATION

MLS® R2623716

Residential Attached

Guildford

2 Bedrooms

2 Bathrooms

1,202 SF

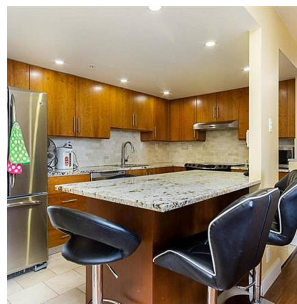
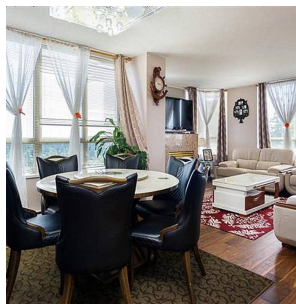
\$650.86 Maintenance Fees

FEATURES

Year Built: 1994

Views: Mountain, Forest, City Lights

Listed By: SRS Panorama Realty



rennie