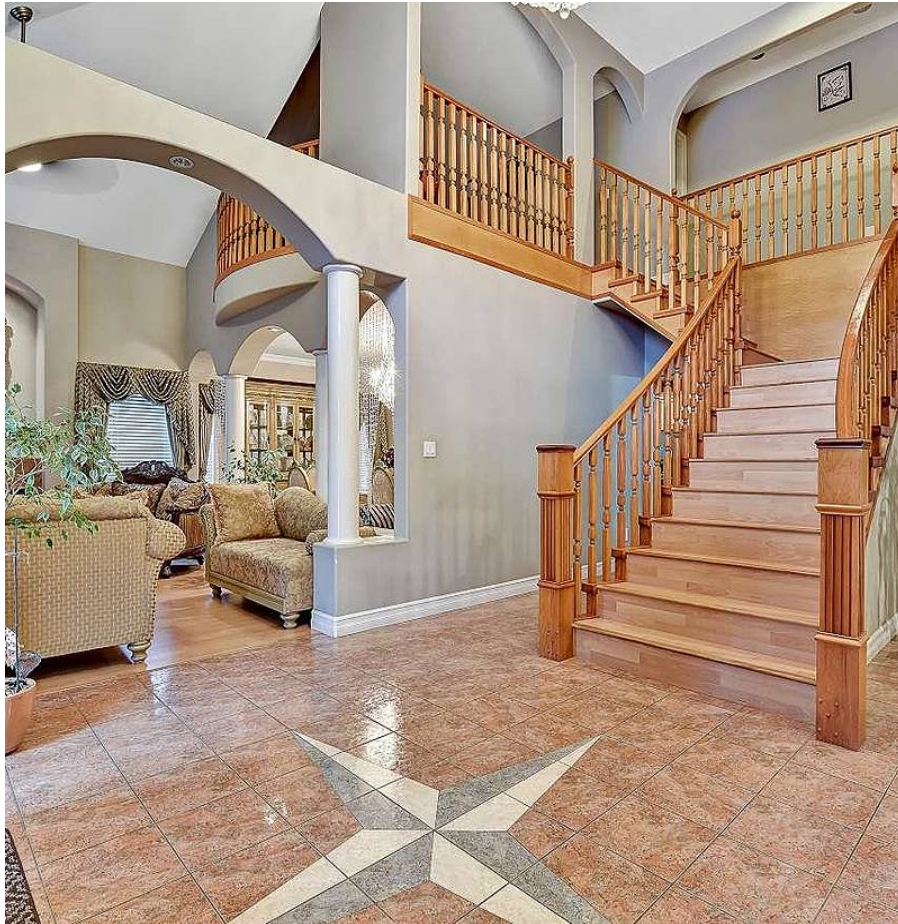


# 17105 Greenway Drive, Surrey

\$2,798,000



Beautiful Custom Built home located in one of the most desirable area of Fleetwood. This Elegant over 5800 sqft built home on a huge over 14000 sqft Lot is close to the green space. You feel as if you are in a country side. Some of the features include 9 good sized bedrooms with 2 master bedrooms, 6 bathrooms, Triple Garage with lots of parking in the front and back, big shed, spice kitchen and much more. All the upstairs bedrooms have Walk In Closets. Close to all the amenities and yet very close to the nature.

## KEY INFORMATION

MLS® R2623755

Residential Detached

Fleetwood Tynehead

9 Bedrooms

6 Bathrooms

6,000 SF

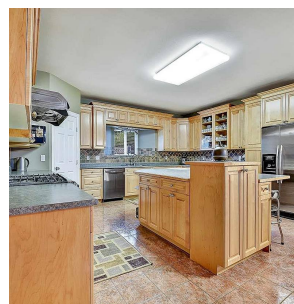
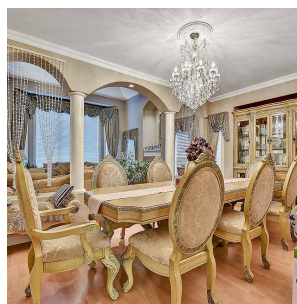
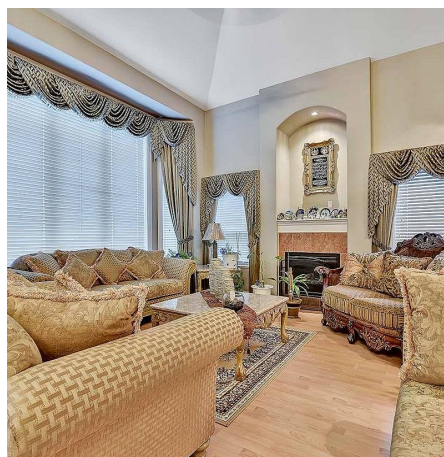
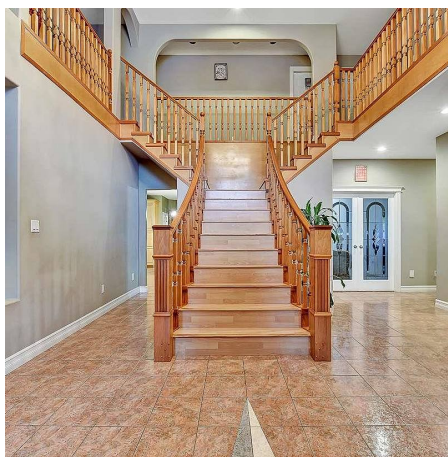
14,163 SF Lot

## FEATURES

Year Built: 2002

Views: Mountain View

Listed By: Century 21 Coastal Realty Ltd.



rennie