

# 602 162 Victory Ship Way, North Vancouver

\$1,050,000



Spacious two bedroom corner suite with corridor views to the water, city and mountains. Atrium is located in a waterfront community with walk to everything convenience. The Seabus, restaurants, shops and recreation are all steps away. You'll appreciate the quality finishing: 9 ft ceilings, fireplace, air conditioning, crown moldings, Bosch and Liebherr stainless kitchen appliances including a gas cooktop, soft close cabinets and granite countertops. Atrium features a 3,000 sq.ft. amenity room complete with games area and kitchen. Owners also enjoy use of the fitness facility next door at the Pinnacle Pier Hotel with its indoor lap pool, whirlpool, sun terrace, steam & sauna and gym. Excellent floor plan with bedrooms on opposite sides, a large kitchen and generous balcony. Move in ready!

## KEY INFORMATION

MLS® R2624252

Residential Attached

Lower Lonsdale

2 Bedrooms

2 Bathrooms

900 SF

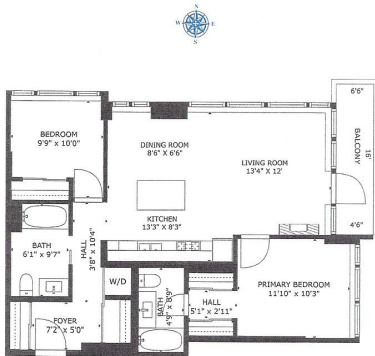
\$523.95 Maintenance Fees

## FEATURES

Year Built: 2010

Views: CORRIDOR WATER, CITY & MNT

Listed By: Anson Realty Ltd.



Total Sq. Ft. 899 Plus Balcony 183 Sq. Ft.  
Measurements are approximate, and no trade should be verified by purchasers.



rennie