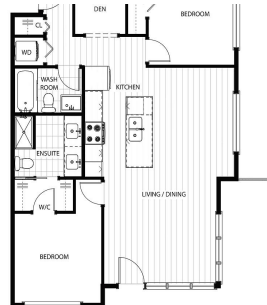


213 15341 17 Avenue, Surrey

\$699,900



PLAN A1
934.5 SQ.FT.



BRAND NEW CONDOS IN SOUTH SURREY!
With an enviable location in one of the West Coast's most popular seaside communities, HALVÖ is a special blend of idyllic qualities offering exquisite 2 Bed + Den, 2 Bedroom, & 1 Bedroom homes. Within minutes of shops, Semiahmoo Mall, schools, parks & the beach – and many other amenities – HALVÖ offers an abundance of daily convenience. Featuring a private residents' health club (including gym & yoga) & a ROOFTOP terrace and lounge - the first of it's kind in South Surrey! Fantastic investment opportunity. These homes feature modern profile cabinetry, designer lighting, Richelieu Hardware, EV Chargers in Parking Stalls, A/C & MORE. Visit our sales team today @ The HALVÖ Presentation Centre: 1734 152 Street, Surrey (Next to Starbucks) Open 12PM-5PM Daily!

KEY INFORMATION

MLS® R2624534

Residential Attached

King George Corridor

2 Bedrooms

2 Bathrooms

935 SF

\$420.50 Maintenance Fees

FEATURES

Year Built: 2023

Listed By: Angell, Hasman & Associates Realty Ltd.

rennie