

5718 Wallace Street, Vancouver

\$4,670,000



Welcome to "TIMELESS MANOR" - CLASSICAL EUROPEAN custom-built LUXURY HOME in rarely available northern sector of the most exclusive SOUTHLANDS community. This remarkable residence is ideally situated on a prime corner lot consisting of +7100 SF, its grounds meticulously maintained and professionally landscaped, integrated fountains in the front/back creating a private zen-like oasis. The manor harbors a sophisticated & historic charm, yet welcoming the most innovative contemporary technologies available (surround sound, AC, radiant floor heating, HRV). World-class craftsmanship, coupled with curated deluxe materials, from maple hardwood floors, marble fireplace mantles, Schonbek chandeliers, & Sub-Zero, Wolf, Miele SS appliances, culminating in the creation of this sensational masterpiece

KEY INFORMATION

MLS® R2624557

Residential Detached

Southlands

6 Bedrooms

7 Bathrooms

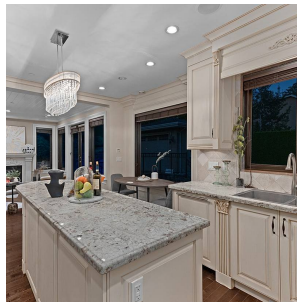
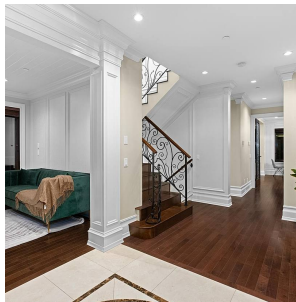
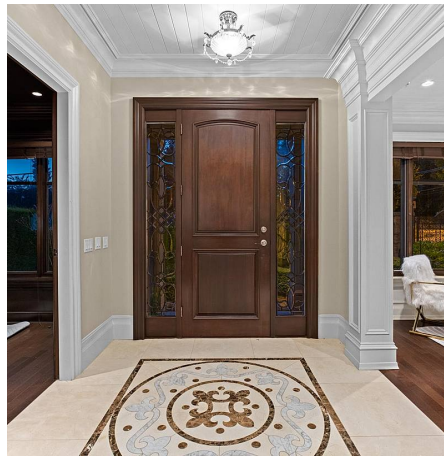
4,018 SF

7,145 SF Lot

FEATURES

Year Built: 2011

Listed By: Faith Wilson Group



rennie