

# Th12 10388 133rd Street, Surrey

\$889,900



Move-In Ready Townhomes. In the heart of Surrey's future-facing city centre, Linea's elegant contours with functional intent. 3 levels Townhomes with roof top patio right next to your family room and garden patio for your family BBQ gathering and beautifully crafted interiors with quality finishes, 8'8" ceilings on main, AC homes, Wireless smart thermostats, Blomberg and Fulgor Milano appliances, Recessed, flush mount, and diffusion LED lighting throughout the home for balanced lighting. More than 14,000 sf of indoor and outdoor amenities space and Luxer One package pick up station. 2 full size of parking stalls and 1 enormous storage room. Showings by Appointment only!

## KEY INFORMATION

MLS® R2625098

Residential Attached

Whalley

3 Bedrooms

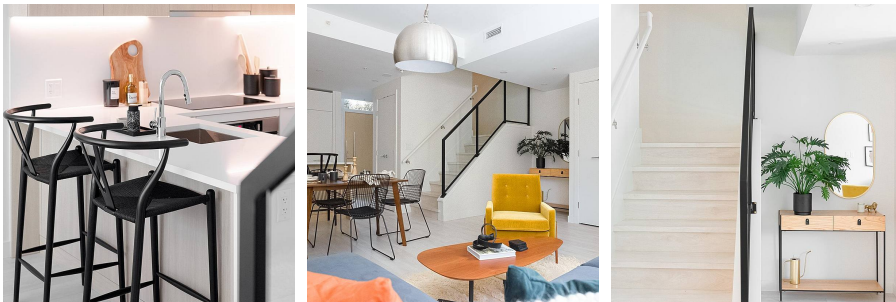
3 Bathrooms

1,431 SF

## FEATURES

Year Built: 2021

Listed By: AXIS Real Estate Solutions Inc.



rennie