

3203 388 Drake Street, Vancouver

\$2,798,000



Elite 2-level PENTHOUSE Unit in Governor's Tower with view from every room. Private elevator. Bright & airy floor to ceiling windows. Magnificent water & city views. It offers 3 bedrooms, 3.5 bathrooms and solarium. Over 2,100 Sq.ft spacious & bright living area. Steps to Urban Fair, Yaletown restaurants, shops & seawalk.

KEY INFORMATION

MLS® R2625349

Residential Attached

Yaletown

3 Bedrooms

4 Bathrooms

2,103 SF

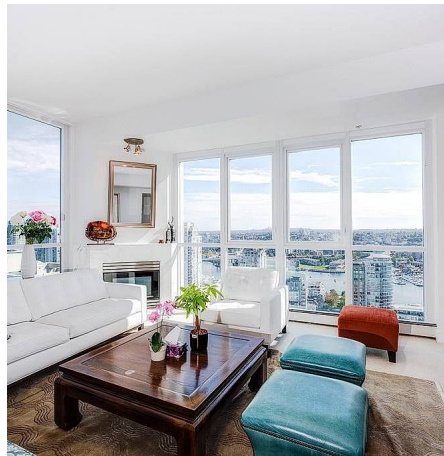
\$1,250.00 Maintenance Fees

FEATURES

Year Built: 1995

Views: OCEAN, CITY AND MOUNTAIN

Listed By: Hooli Homes (Vancouver) Real Estate Services Ltd.



rennie