

# 1602 6188 Patterson Avenue, Burnaby

\$818,000



Beautiful 2 bedroom unit in the Wimbledon Club in Metrotown area. Offers generous 1114 SQFT of spacing with 2 full bathroom, 2 bedrooms and large living room area over looking court and Central Park area. Freshly painted and shows well. Full size kitchen with access to the balcony for your morning coffee. Well maintained building with lots of amenities including exercise centre, clubroom, billiards, indoor pool, guest suites and more. Convenient location, walk to Metrotown, Patterson skytrain, Central Park, Crystal Mall, T&T, library, restaurants and more.

## KEY INFORMATION

MLS® R2625458

Residential Attached

Metrotown

2 Bedrooms

2 Bathrooms

1,114 SF

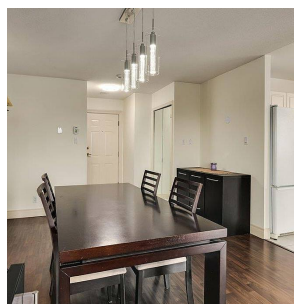
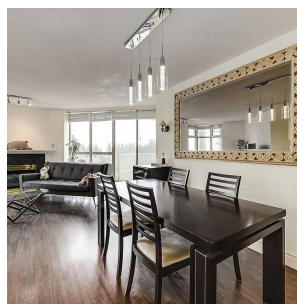
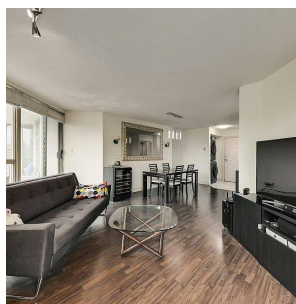
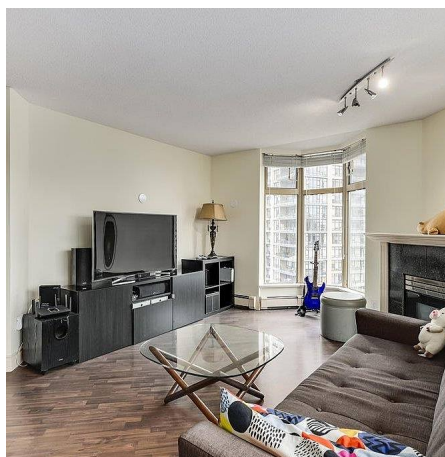
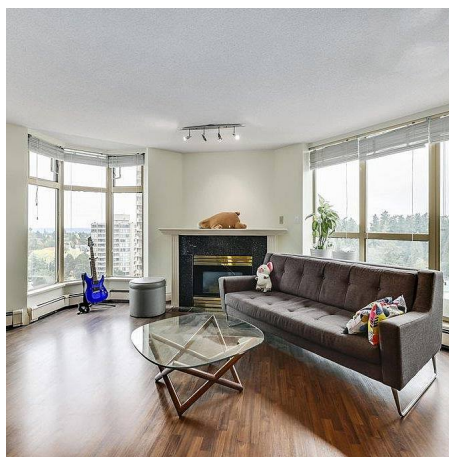
\$500.00 Maintenance Fees

## FEATURES

Year Built: 1993

Views: Central Park

Listed By: Sutton Group - 1st West Realty



rennie