

Ph1 2088 W 11th Avenue, Vancouver

\$949,000



Location, Location, Location! Exceptional NW Corner Unit Penthouse in an extremely sought after location in Kitsilano. Gorgeous Mountain Views from your open concept Kitchen, featuring a large island, stainless steel appliances, granite countertops, floor to ceilings windows which allow an abundance of Natural Light. Two Bedrooms situated on opposite sides of this corner unit, with a lovely walk-in pantry/laundry room. Cozy living space complete with a Gas fireplace, hardwood flooring throughout, 9' Ceilings and built-in entertainment unit. Amazingly located near the Arbutus Walk way, Shopping, recreation & future Skytrain. Common outdoor Patio Space and One Parking included.

KEY INFORMATION

MLS® R2627157

Residential Attached

Kitsilano

2 Bedrooms

1 Bathroom

916 SF

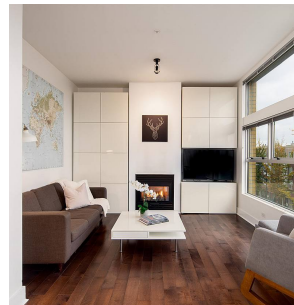
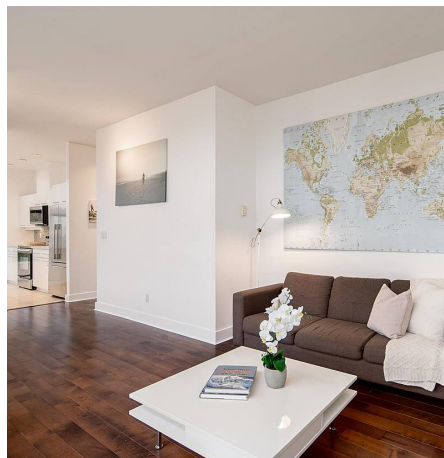
\$287.28 Maintenance Fees

FEATURES

Year Built: 2000

Views: Mountains & Arbutus Walk

Listed By: Macdonald Realty



rennie