

7 6033 168 Street, Surrey

\$799,000



Welcome to the rarely available and highly sought-after Chestnut End unit. This 3 bedroom, 3 bath end unit features 9 ft. ceilings on the main floor, hardwood bamboo floors with granite counters. Its has a south facing backyard, ideal for kids and the family BBQ. You have 3 generous-sized bedrooms and the master has en-suite. You also have a double tandem garage and driveway, so there is plenty of room for parking. You also have a bonus flex room with backyard access. Close to AJ McLellan Elementary and Cloverdale Athletic park. Easy access to transit and highway 10.

KEY INFORMATION

MLS® R2627124

Residential Attached

Cloverdale

3 Bedrooms

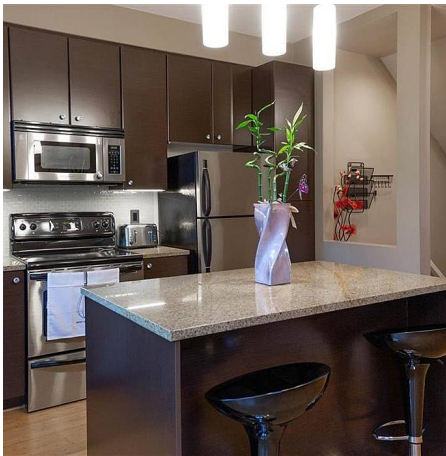
3 Bathrooms

1,884 SF

FEATURES

Year Built: 2006

Listed By: Nationwide Realty Corp.



rennie