

1 1891 Marine Drive, West Vancouver

\$1,579,000



Exclusive PARKVIEW PLACE! 10 unit boutique development. This is the sole 3 bedroom & den plan and is on the 2nd floor on S/W corner. PRIVATE - This home does not share walls with neighbours! Beautiful high quality custom finishings throughout - hardwood floors, 9' ceilings, radiant in floor heat, Suket gas fireplace, Wolf gas stove top, subzero fridge & wine cooler. Heat, hot water & gas included in strata fee. Open covered courtyard to your own front door. Pets & rentals allowed. Across the street from Memorial Park. Easy stroll to library, rec centre, popular seawall & a multitude of shops and restaurants create a host of amenities to enjoy.

KEY INFORMATION

MLS® R2627215

Residential Attached

Ambleside

3 Bedrooms

2 Bathrooms

1,374 SF

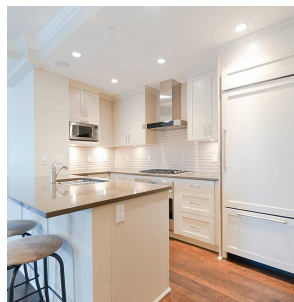
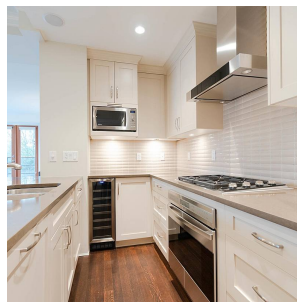
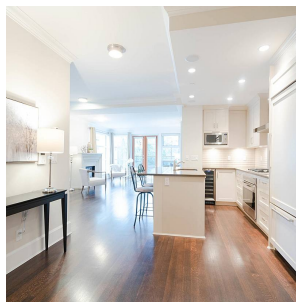
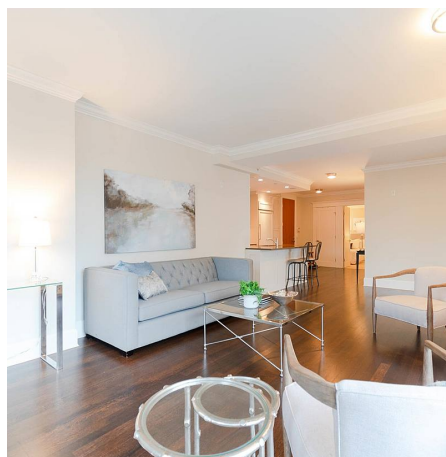
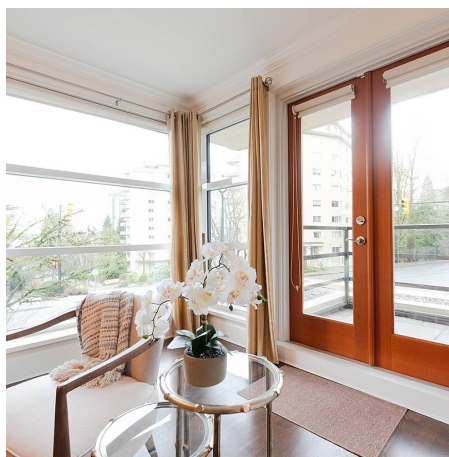
\$1,260.61 Maintenance Fees

FEATURES

Year Built: 2010

Views: Seasonal Ocean View & Mt Baker

Listed By: RE/MAX Masters Realty



rennie