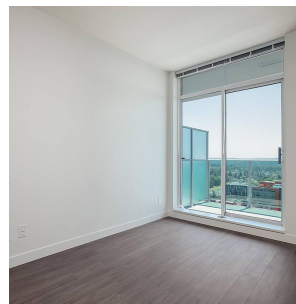
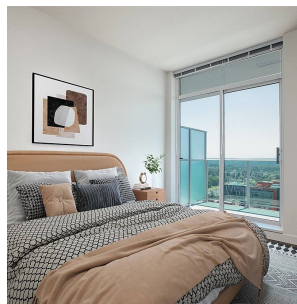
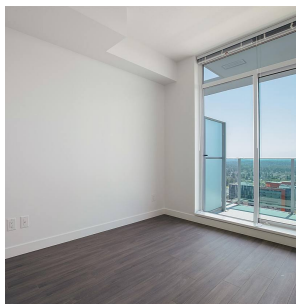


2801 13655 Fraser Highway, Surrey

\$599,900



Welcome home to highly sought after KING GEORGE HUB TWO, conveniently located in the heart of Central Surrey! Built by award winning PCI Developments w/ interior design by BYU, this PENTHOUSE LEVEL home is EXCLUSIVE to floors 24-28 only, and feat. 728 sq ft, 2 Beds, 1 Bath, 2 spacious balconies w/ endless views, Blomberg fridge/dishwasher, Fulgor Milano s/s oven, quartz countertops, laminate flooring, extra storage space in-suite, 1 Parking, & 1 Bicycle rack. Amenities include: rooftop w/ outdoor lounge, BBQ & child's play area, theatre room, private dining w/ cooktop, fitness center, plus more! Walking distance to shops & restaurants, Central City Shopping Centre, T&T Supermarket, & SFU Surrey Campus. Located right next King George SKYTRAIN Station!

KEY INFORMATION

MLS® R2627298

Residential Attached

Whalley

2 Bedrooms

1 Bathroom

728 SF

\$350.16 Maintenance Fees

FEATURES

Year Built: 2021

Views: CITY AND GREENERY

Listed By: rennie & associates realty ltd.



Eric Zamora PREC*
778.389.4556
ezamora@rennie.com
rennie.com/ericzamora

rennie