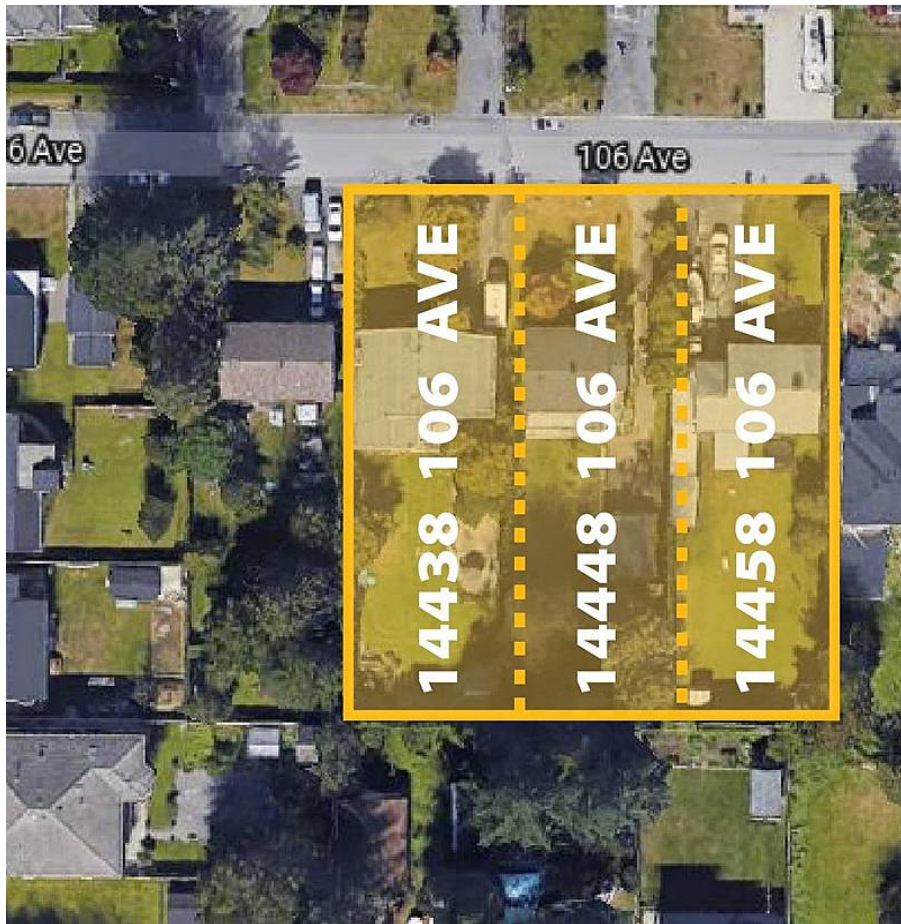


14458 106 Avenue, Surrey

\$2,300,000



Rarely available townhouse development site in the core area of Guildford Town Center and 104 Ave Corridor. Total site area is 35,712 SQFT.

KEY INFORMATION

MLS® R2627340

Residential Detached

Guildford

4 Bedrooms

2 Bathrooms

2,080 SF

11,910 SF Lot

FEATURES

Year Built: 1967

Listed By: Homelife Benchmark Titus Realty