

18190 92 Avenue, Surrey

\$12,500,000



5 ACRE Townhouse property in Anniedale-Tynehead NCP development area. Country classic 3335 sq ft 2 storey well-maintained home with wraparound porch and topped off with a gabled roof. Greatroom plan with country kitchen, large island open to dining & living areas. 50 x 100 shop with 3 phase power. Lightly treed property on city water with view of farmland and easy access to hwy 1, Golden Ears Bridge & border. Excellent revenue generator as a holding property. Proposed school & strip mall nearby.

KEY INFORMATION

MLS® R2627870

Residential Detached

Port Kells

7 Bedrooms

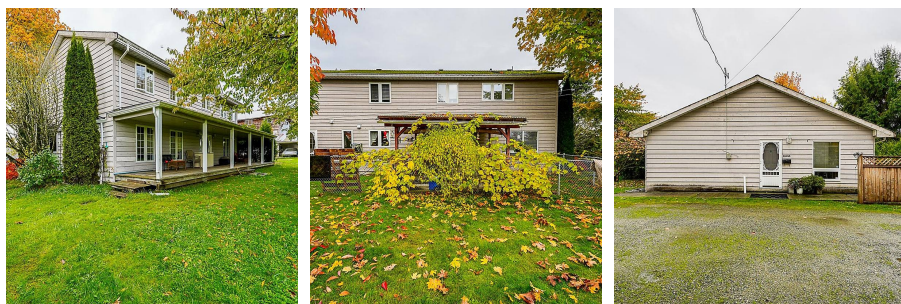
4 Bathrooms

3,335 SF

FEATURES

Year Built: 1995

Listed By: Century 21 Coastal Realty Ltd.



rennie