

2102 888 Hamilton Street, Vancouver

\$1,128,000



Newly Renovated and 2 Parking! Welcome to this desirable upper level, south facing unit in Rosedale Garden in Yaletown! This 2 bed, 2 bath + den and nearly 1,000 SF home features grand windows boasting south facing and open city views of Yaletown from both bedrooms and the living area. Updates include new laminate flooring, lighting package, silestone countertops, new stainless steel appliances, new paint and more! The '02 floor plan is arguably the best layout and location in the building offering complete privacy from neighbouring buildings. This property includes a 57 square foot balcony, 2 parking stalls and one locker. Don't miss out on this popular building conveniently located near shops, public transit and great restaurants!

KEY INFORMATION

MLS® R2627942

Residential Attached

Downtown

2 Bedrooms

2 Bathrooms

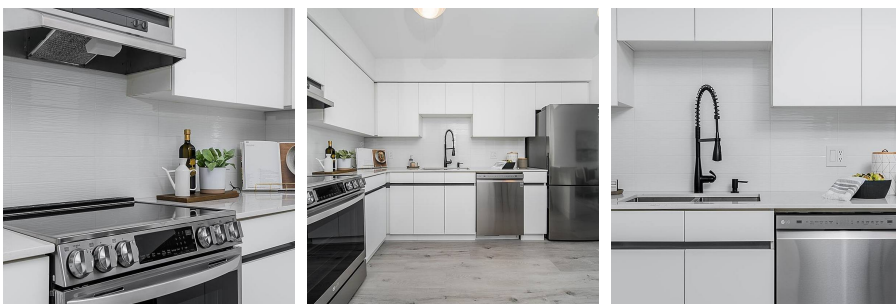
995 SF

\$407.48 Maintenance Fees

FEATURES

Year Built: 1993

Listed By: Angell, Hasman & Associates Realty Ltd.



rennie