

1205 8871 Lansdowne Road, Richmond

\$529,900



Centre Pointe. Heart location of Richmond city. Walking distance to Kwantlen University, T&T Supermarket, Skytrain station, Restaurants, super convenient area. East facing ONE large bedroom plus DEN unit with a great view of Garden City Lands. Inner building makes every room very quiet. Totally renovated - Brand New FLOOR, Wall painting, Appliances, Counter Top. The unit also comes with 1 parking and 1 locker. Open House: October 30 & 31, 2-4 pm. Offer, if any, please send on November 2nd before 7pm.

KEY INFORMATION

MLS® R2628017

Residential Attached

Brighthouse

1 Bedroom

1 Bathroom

800 SF

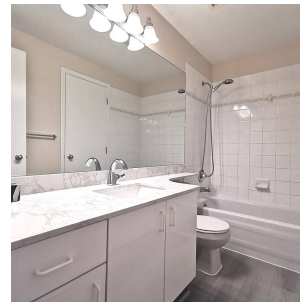
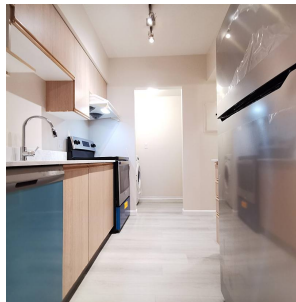
\$203.00 Maintenance Fees

FEATURES

Year Built: 1995

Views: park

Listed By: Metro Edge Realty



rennie