

405 988 W 21st Avenue, Vancouver

\$650,000



1 BR 1 Bath on top floor corner unit in Douglas Park neighborhood. 2 exits from the condo leading to a nice balcony with Panoramic view to enjoy the sun & BBQ w/ your friends. This home features a skylight above the kitchen, Panoramic views of the mountains from shared rooftop deck just steps outside your door. Around the corner is a convenience store, Starbucks & restaurants & Safeway. Oakridge Centre is minutes away. With Public transit outside your door,, you'll absolutely love it here! 1 locker & 1 parking stall. 2 pets allowed, not to exceed 20" in height or 40lbs. Rentals are maxed out at 7. Roof is only 5 years old, amazing well kept complex!

KEY INFORMATION

MLS® R2627531

Residential Attached

Cambie

1 Bedroom

1 Bathroom

607 SF

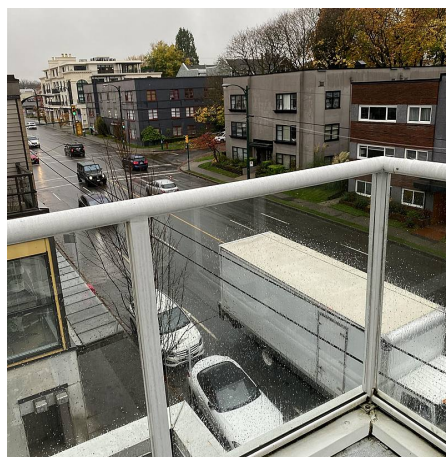
\$299.49 Maintenance Fees

FEATURES

Year Built: 1997

Views: City

Listed By: RE/MAX City Realty



rennie