

7571 Eperson Road, Richmond

\$2,880,000



Prestige home locate in the heart of the desirable Quilchena neighbourhood, and just steps away to the beautiful Morris School Park. 4,300 sft house was built on a large 7,900 lot with open surrounding. Roof was redone with CERTAINTEED LANMARK 30-Yr asphalt shingle in 2018. This well-crafted home comes with 6 bdrms & 5.5 baths, which is more than enough for a growing family. Grand open foyer connects living space and bedrooms with year-round sun light coming through skylight. Functional layout provides separated spaces for kitchen, living room, family room and bedrooms on the main floor, while four bedrooms and a huge game room on the upper floor. Grauer Elementary and Boyd Secondary school catchment would be a bonus for parents.

KEY INFORMATION

MLS® R2628785

Residential Detached

Quilchena

6 Bedrooms

6 Bathrooms

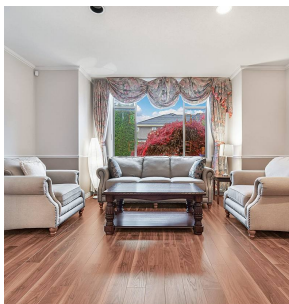
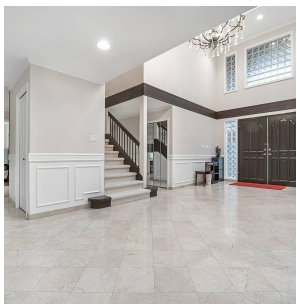
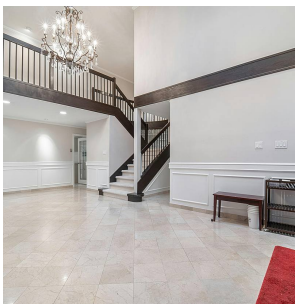
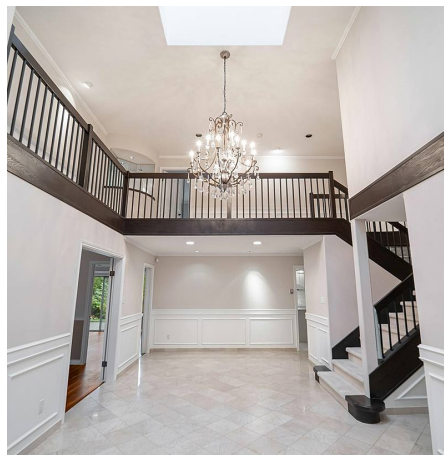
4,493 SF

7,918 SF Lot

FEATURES

Year Built: 1991

Listed By: Grand Central Realty



rennie