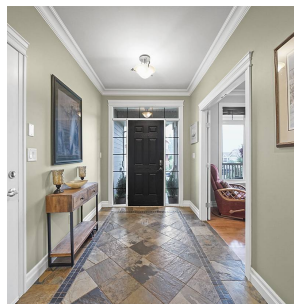


27 14550 Morris Valley Road, Mission

\$849,000



Attn golfers, retirees & outdoor enthusiasts!
Custom 2 bed 3 bath home steps from Sandpiper golf course - just 30min to Sasquatch Mtn resort. This home boasts a stylish slate entry, fresh paint throughout, handscraped hardwood leading to the open concept great room with an abundance of natural light. The kitchen features designer tile floors, granite counters & all stainless appliances. The main floor master suite will pamper you with a separate soaker tub, walk in closet+ expansive storage. New carpet leads to the fully vaulted upstairs w/ huge 2nd bedroom, 3pc bathroom, + massive rec room that could easily become a 3rd bdrm. Outside you'll notice the immaculate curb appeal, dbl garage, mature privacy hedge+ large, level private backyard w/ huge patio. Open house Nov 6+7th 2-4.

KEY INFORMATION

MLS® R2629266

Residential Detached

Lake Errock

2 Bedrooms

3 Bathrooms

1,960 SF

6,222 SF Lot

FEATURES

Year Built: 2007

Listed By: Keller Williams Elite Realty

rennie