

# Ph4 488 W 58th Avenue, Vancouver

\$1,808,900



THE PENTHOUSE - PARK HOUSE features two iconic concrete park side buildings designed by award-winning FRANCL Architecture. Bordered by Winona Park & Langara Golf Course. Steps from urban convenience of growing South Cambie Hub and future skytrain station. Kitchen by Italian Scavolini, Miele appliance package and Caesarstone countertops with waterfall edge on kitchen island. Spalike baths with tiles from floor to wall, Grohe fixtures, built-in medicine cabinets. Generous sized balcony is perfect for outdoor entertainment. Engineered oak hardwood floor throughout living spaces and bedrooms. A/C/Heat & 9' ceilings. Gated underground parking and walking distance to schools. MOVE IN READY - OPEN HOUSE Saturday SUNDAY 2-4 PM

## KEY INFORMATION

MLS® R2629363

Residential Attached

South Cambie

3 Bedrooms

2 Bathrooms

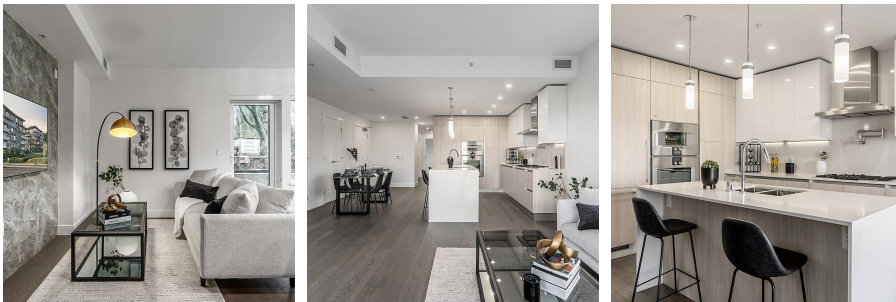
1,230 SF

\$743.52 Maintenance Fees

## FEATURES

Year Built: 2021

Listed By: Oakwyn Realty Downtown Ltd.



rennie