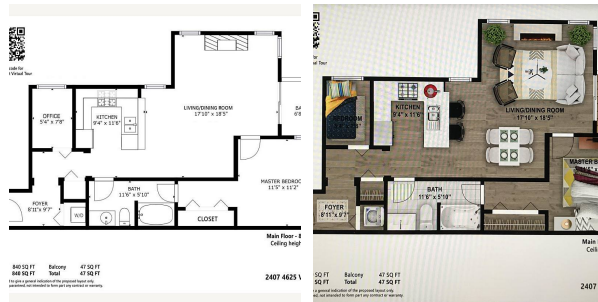
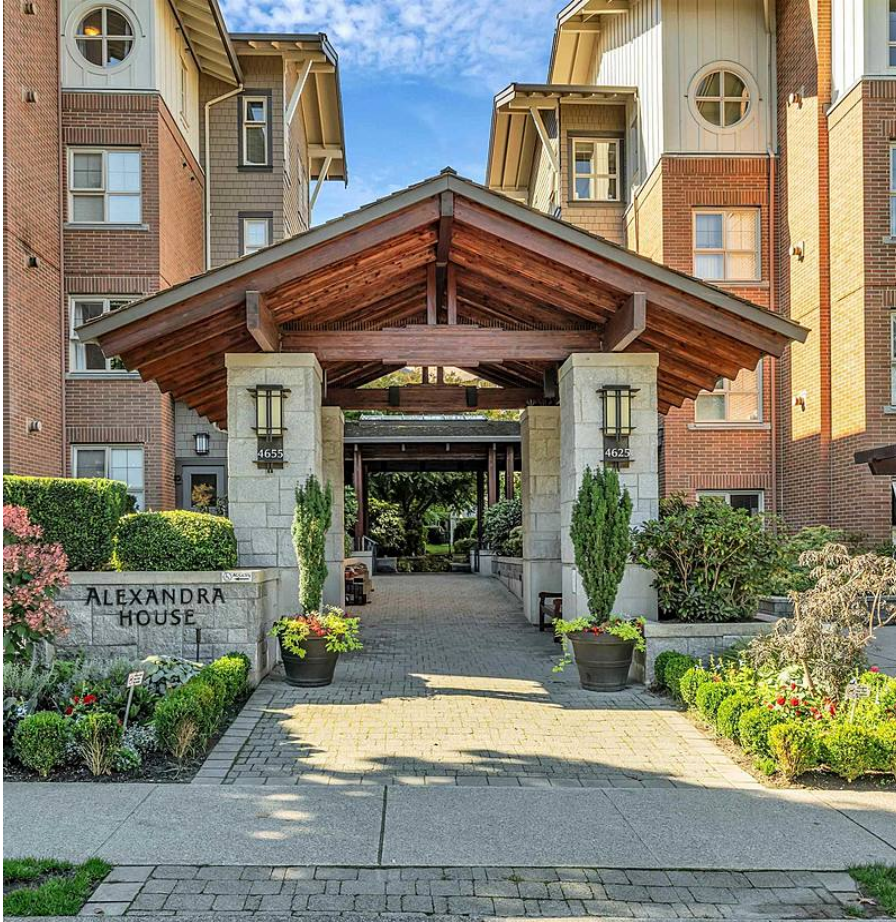


# 2407 4625 Valley Drive, Vancouver

\$849,000



Bright Corner Penthouse with Garden VIEW in Alexandra House by Polygon directly across from beautiful Quilchena Park. This quiet 1 Bed plus 1 large den with window, could be a second Bed has high 10'ft ceilings, features open concept kitchen, open balcony off the living & dining area, Master bedroom is spacious with walk-through closets. New Appliances replaced in 2020. Gas Fireplace. 1 parking stall. Facilities include outdoor pool, gym, bike room, and lots of visitor parking. Walk to Shaughnessy Elementary, Prince of Wales, Point Grey Secondary & York House School. An easy bus access to UBC, downtown & Richmond. Next to Arbutus greenway, brand new Arbutus Village shops & prestigious Arbutus Club. <https://my.matterport.com/show/?m=PMjw3o47zHc>

## KEY INFORMATION

MLS® R2629280

Residential Attached

Quilchena

1 Bedroom

1 Bathroom

840 SF

\$412.28 Maintenance Fees

## FEATURES

Year Built: 2002

Views: PARK

Listed By: Royal Pacific Realty Corp.