

501 3533 Ross Drive, Vancouver

\$1,268,000



almost Brand New building built by Polygon, spacious NE + West facing unit, This 2-bed, 2-bath home features a open-plan, designer kitchen, premium appliances and A/C. Read a good book on the generous covered deck on a summer day. Enjoy the convenience of an in-building fitness studio, social lounge and a resident manager. The Residence at Nobel Park offers convenient everyday living amid and environment of academic excellence. Just steps away is UBC farm and Wesbrook Village, a picturesque community with treelined streets and an abundance of shops and services. Great elementary and U-Hill secondary schools are just 5 minutes away. Must see. Open house: Nov 13th 2-3pm by appointment only

KEY INFORMATION

MLS® R2629390

Residential Attached

University

2 Bedrooms

2 Bathrooms

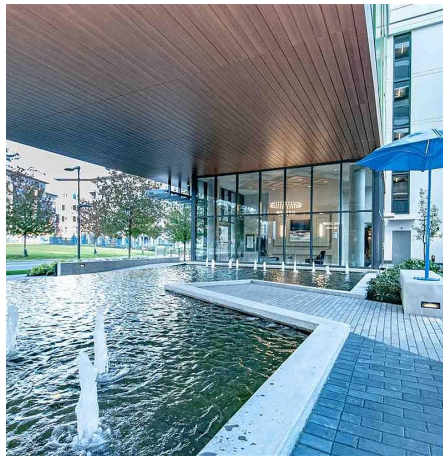
938 SF

\$374.88 Maintenance Fees

FEATURES

Year Built: 2020

Listed By: Multiple Realty Ltd.



rennie