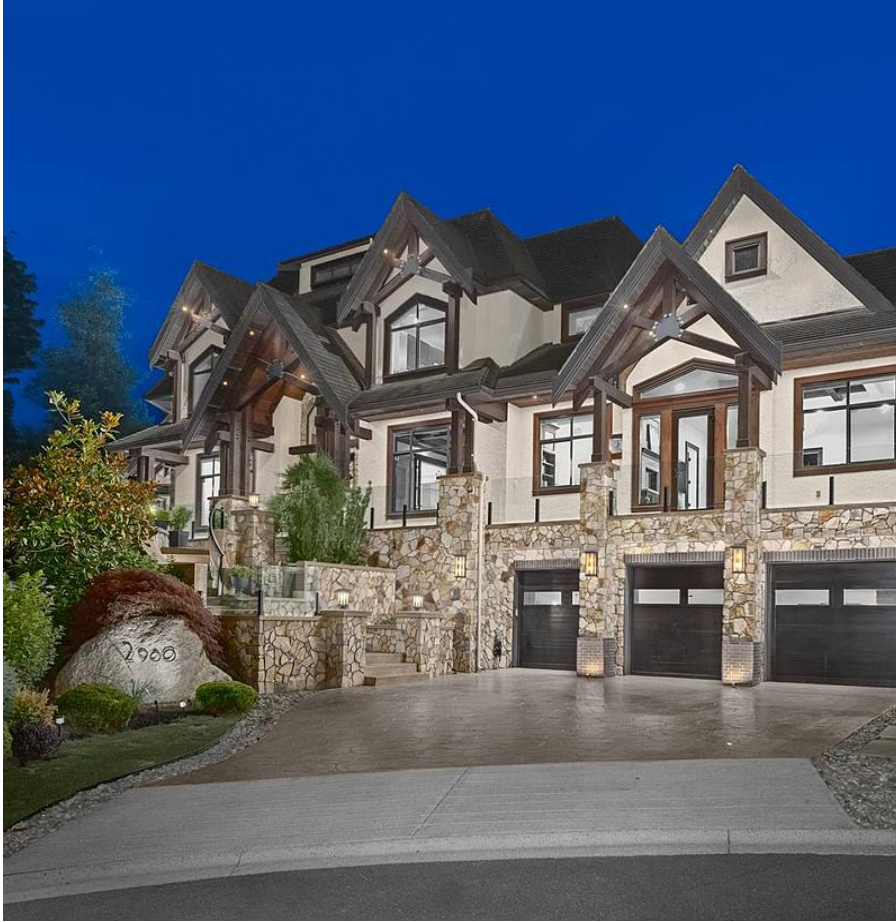


2960 161a Street, Surrey

\$4,199,000



Luxurious Whistler-Inspired Mansion situated in the prestigious enclave of Morgan Acres. This 8,153sqft mansion boasts Panoramic North Shore Mountain views from all principal living spaces. Grand Foyer with soaring ceilings, custom inlaid marble floor & opulent crystal chandelier sets the tone of elegance & sophistication. Double height formal Living Room & Private Dining Room for entertaining, a Gorgeous Great Room with access to the resort-like backyard. One-of-a-kind Chef's Dream Kitchen & Wok Kitchen. Master Suite conveniently tucked away on the main floor with a rich Calacatta Marble Ensuite. Lower level complete with a Rec. Room, Theatre Room, Bar, Gym, Spa-bathroom & so much more. Minutes to Southridge Private School, Morgan Creek Golf Course, Grandview Corners Shops & Restaurants.

KEY INFORMATION

MLS® R2629589

Residential Detached

Grandview Surrey

7 Bedrooms

8 Bathrooms

8,153 SF

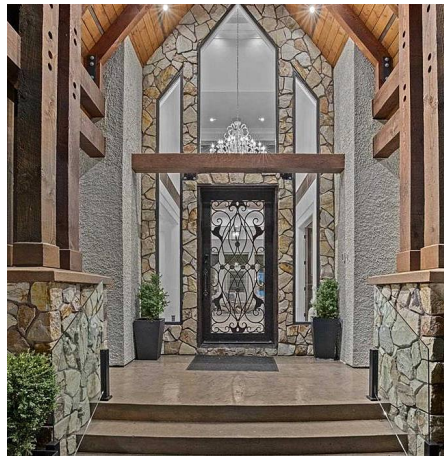
16,039 SF Lot

FEATURES

Year Built: 2014

Views: Panoramic North Shore Mountain

Listed By: Macdonald Realty (Surrey/152)



rennie