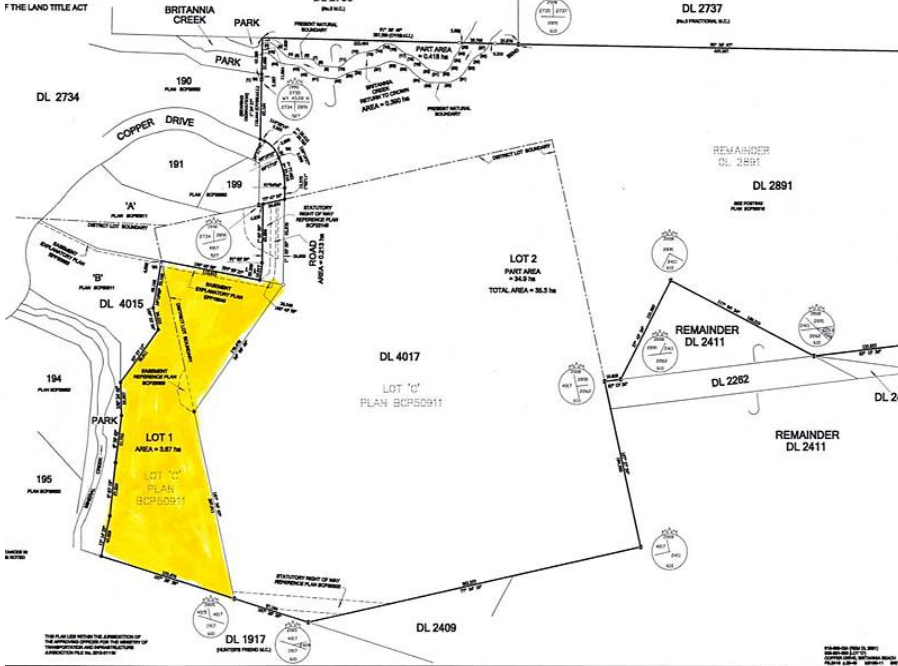


1188 Copper Drive, Britannia Beach

\$4,250,000

DL 2891, 4015 AND 4017, PLAN BCP50911; AND EXCEPT PORTIONS IN 2 AND 2283 AND PLAN BCP50911; NEW WESTMINSTER DISTRICT



Incredible buildable acreage in Britannia Beach features unprecedented ocean views. 9.068 acres, approximately 2 acres of level plateau has already been cleared. Distinguishable by its flat topography with stunning ocean and mountain views to the west, services including water and sewer are available for two homes. The remaining acreage is in its natural state and can be developed to suit with some nice flat areas and 8%-10% grade in other areas. Gorgeous woodlands borders the cleared plateau and provides optimum privacy and an abundance of natural beauty. Designated park runs along the property line to the south west, enjoy the sound of Mineral Creek and scenic natural waterfalls. Survey available upon request. Create your mountain "estate" !

KEY INFORMATION

MLS® R2629705

Land Only

Britannia Beach

0 Bedrooms

0 Bathrooms

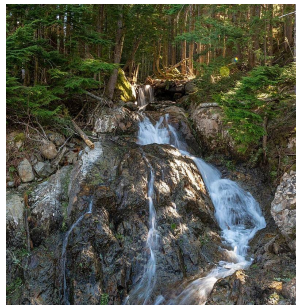
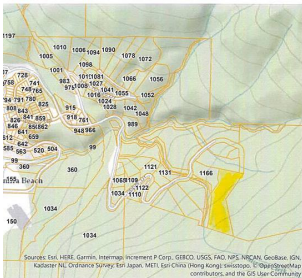
0 SF

395,002 SF Lot

FEATURES

Views: Panoramic Ocean Views

Listed By: Sotheby's International Realty Canada



rennie