

649 Edith Point Road, Mayne Island

\$1,288,000



This lovely 2800 sq ft oceanfront home with great bones awaits it's new life as a stately family residence (with some renovations to be completed). Looking towards Tsawwassen and Pt Roberts, the extremely private location is at the end of a country lane, and adjacent to a park and meandering trails. Lovely floor plan features a large family room with airtight woodstove and bench seat, separate dining room and eat in Kitchen, wet bar, Reception room with vaulted ceilings and wide staircase leading to second floor Master Bedroom with bench seat, 4pc en-suite and separate office/sewing room, guest bedroom and gorgeous 4 piece main bath. Lower level office/bedroom, laundry, utility room, and laundry. Enclosed double garage/workshop. Greenhouse, huge deck, landscaped gardens.

KEY INFORMATION

MLS® R2629765

Residential Detached

Mayne Island

3 Bedrooms

3 Bathrooms

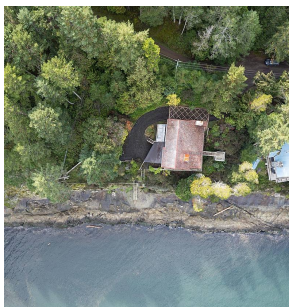
3,650 SF

12,196 SF Lot

FEATURES

Year Built: 1982

Listed By: rennie & associates realty ltd.



Belinda Grant
604.906.2099
bgrant@rennie.com
rennie.com/belindagrants

rennie