

825 68 Smithe Street, Vancouver

\$738,900



Welcome home to the One Pacific Suite that you have been waiting for. This home offers 9' ceilings, A/C, open and efficient layout, with wide plank laminate flooring, and extensive use of Marble. Enjoy the luxurious stainless steel Miele appliances, soft close cabinetry & Quartz counter-top. The sun-drenched solarium with large floor to ceiling windows is perfect for a home office. The generous sized den with the sliding doors can be used as a guest room or amazing storage space. An ultra convenient and desired Yaletown location, at the Center of the city's sports & entertainment district & steps to world class dining & shopping in Yaletown and the Marinaside seawall. COVID-19 showing protocol in place, must wear masks. One parking & storage locker are included.

KEY INFORMATION

MLS® R2630125

Residential Attached

Downtown

1 Bedroom

1 Bathroom

584 SF

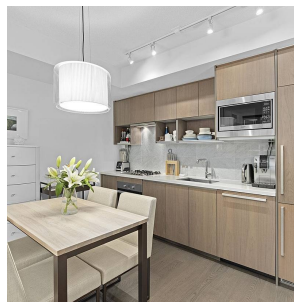
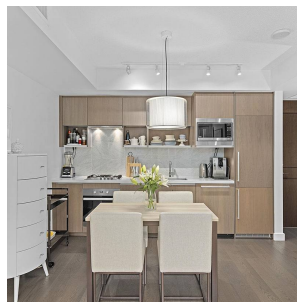
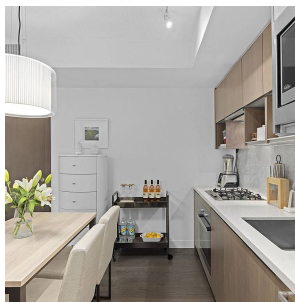
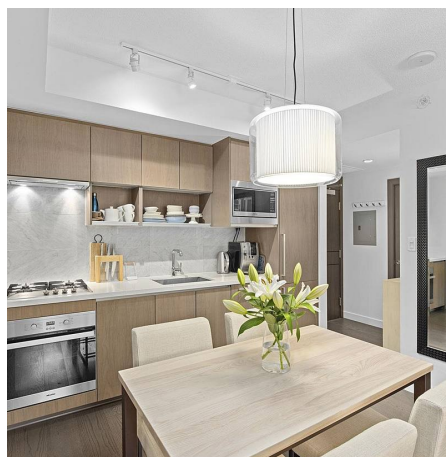
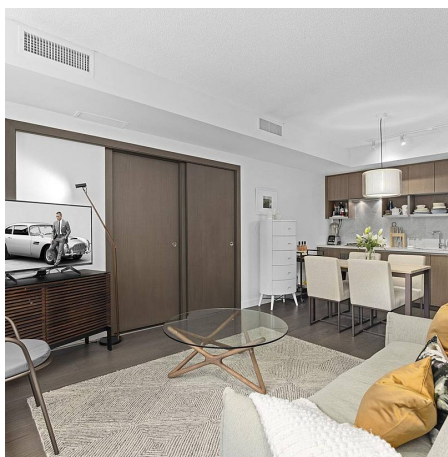
\$389.27 Maintenance Fees

FEATURES

Year Built: 2016

Views: Some False Creek Waterviews

Listed By: Prompton Real Estate Services Inc.



rennie