

3407 2180 Kelly Avenue, Port Coquitlam

\$595,000



Central location , just one block away from the West Coast Express . You will be right at downtown Port Coquitlam with many shops , restaurant , and all levels of schools . Across the street is brand new Port Coquitlam Community Centre , you can swim , gym and lots of games , classes . This corner unit facing the beautiful courtyard ,has a great layout and thoughtful design . OPEN HOUSE BY APPOINTMENT SAT/SUN NOV6/7 , 2-4 PM . Virtual Tour at :<https://my.matterport.com/show/?m=eUcpg9DBHVY&m=1>

KEY INFORMATION

MLS® R2630234

Residential Attached

Central Port Coquitlam

2 Bedrooms

2 Bathrooms

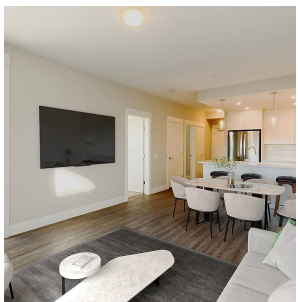
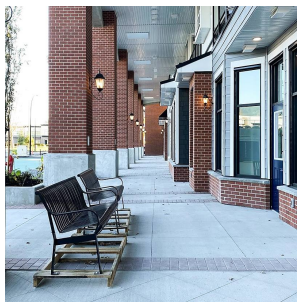
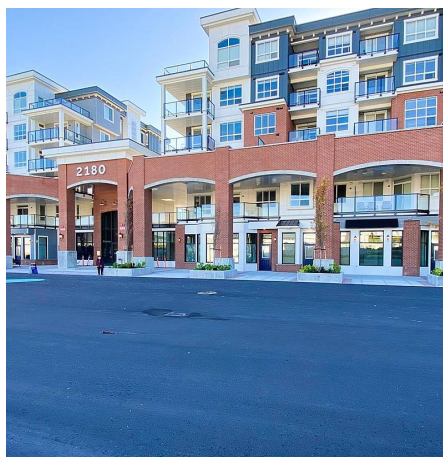
861 SF

\$333.76 Maintenance Fees

FEATURES

Year Built: 2021

Listed By: Grand Central Realty



rennie