

B201 20487 65 Avenue, Langley

\$599,900



TOWNSHIP COMMONS - Absolutely gorgeous TWO bedroom and DEN floor plan and a CORNER UNIT as well - nice and bright with Modern color scheme, and one of the LARGEST BALCONIES in the complex! Located on the quiet side of the building, access to the balcony is from both the living room and the master bedroom. Den has a nice big window for lots of natural light. Fabulous location - walking distance to all the amenities. Two parking stalls, locker, two pets allowed, no size restrictions and no rental restrictions make this apartment an excellent choice for both investors and owners!

KEY INFORMATION

MLS® R2630524

Residential Attached

Willoughby Heights

2 Bedrooms

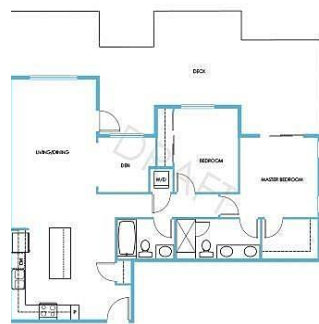
2 Bathrooms

1,068 SF

\$420.15 Maintenance Fees



TOWNSHIP COMMONS

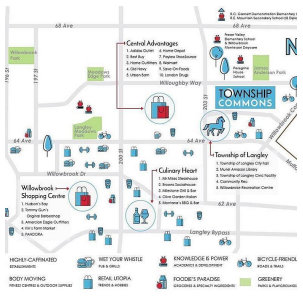


PLAN
CONDOMINIUM
2 BEDROOM +
2 BATH
1,068 SQ.FT

FEATURES

Year Built: 2021

Listed By: Royal LePage - Wolstencroft



GENEROUS DESIGNER KITCHENS ABUNDANT SPACE **LIVE**



DESIGNER HOMES

With numerous expertly crafted plans and three distinct colour schemes, including one particularly bold statement make there is no shortage of selection for finding the perfect match to how you want to live.

