

20128 Wharf Street, Maple Ridge

\$1,780,000



Riverfront Property on the mighty Fraser River, 50 x 110 in Historic Hammond Area. Park your boat in front of your 2 bedroom rancher (lots of room to make bigger) or build your mansion. You will feel like you are on vacation everyday. Riverfront properties don't come on the market often. Hurry!

KEY INFORMATION

MLS® R2630527

Residential Detached

Southwest Maple Ridge

2 Bedrooms

1 Bathroom

835 SF

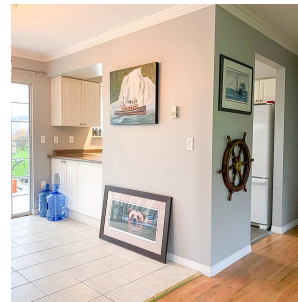
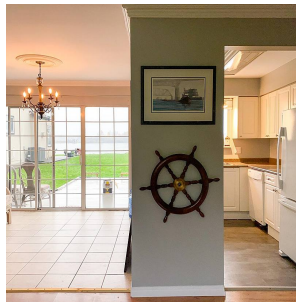
6,500 SF Lot

FEATURES

Year Built: 1983

Views: RIVER, WATER

Listed By: Macdonald Realty



rennie