

# 1806 3538 Sawmill Crescent, Vancouver

\$899,900



This 2bdrm+flex,2bath home is located in River District's (RD) new Avalon3 (AP3) community, RD's tallest concrete building. Equipped w/ premium appliances: fully integrated fridge & dishwasher, gas range, glass backsplash, wall oven & built-in microwave, w/ upgraded interior finishes – these homes soar by comparison. AP3 also offers enviable access to Town Centre retailers & lush green space along w/ outstanding onsite amenities including rooftop pool & hot tub, daytime concierge, 20,000SF community courtyard. AP3's homes truly raise the bar w/ RD's best views & upgraded features. Come see the elevated lifestyle you could be living, still at Vancouver's absolute best value. Sales Centre open Thursday - Monday 11am-4pm. Move in Dec 2021 - Feb 2022. Closed Tues and Wed.

## KEY INFORMATION

MLS® R2630276

Residential Attached

South Marine

2 Bedrooms

2 Bathrooms

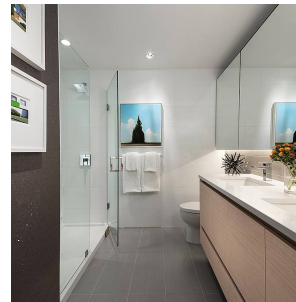
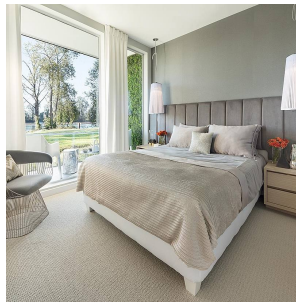
840 SF

\$427.60 Maintenance Fees

## FEATURES

Year Built: 2021

Listed By: Wesgroup Realty Ltd.



rennie