

# 2985 Woodcrest Place, Surrey

\$4,188,000



Prestigious-private 1 acre in Woodcrest Place cul-de-sac! Custom built executive home with grand foyer opening onto formal living and dining rooms. Gourmet kitchen granite counters, large island, full-size sub-zero fridge and freezer, six burner & grill gas cooktop, butler pantry. Open concept family room, rec room w/theatre. Spacious Master suite on main- w/sitting area featuring a fireplace, ensuite w/glass steam shower, jetted tub and his and hers large walk-in closets. 5 bedrms up. 6 car garages. Loft above garage w/separate entry & full bathroom-perfect home office/nanny quarters or guest suite. Sunny backyard beautifully landscaped w/pond, patios/workshop. School catchment Chantrell Creek/Elgin Park Secondary.

## KEY INFORMATION

MLS® R2631524

Residential Detached

Elgin Chantrell

6 Bedrooms

6 Bathrooms

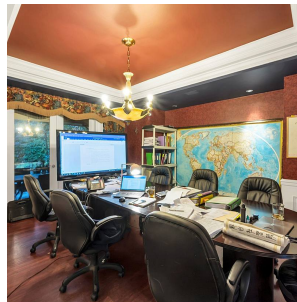
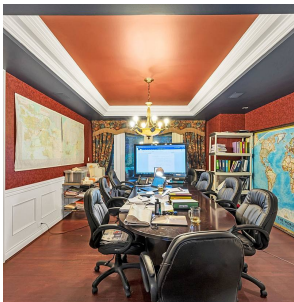
5,918 SF

43,560 SF Lot

## FEATURES

Year Built: 1997

Listed By: RE/MAX Westcoast



rennie