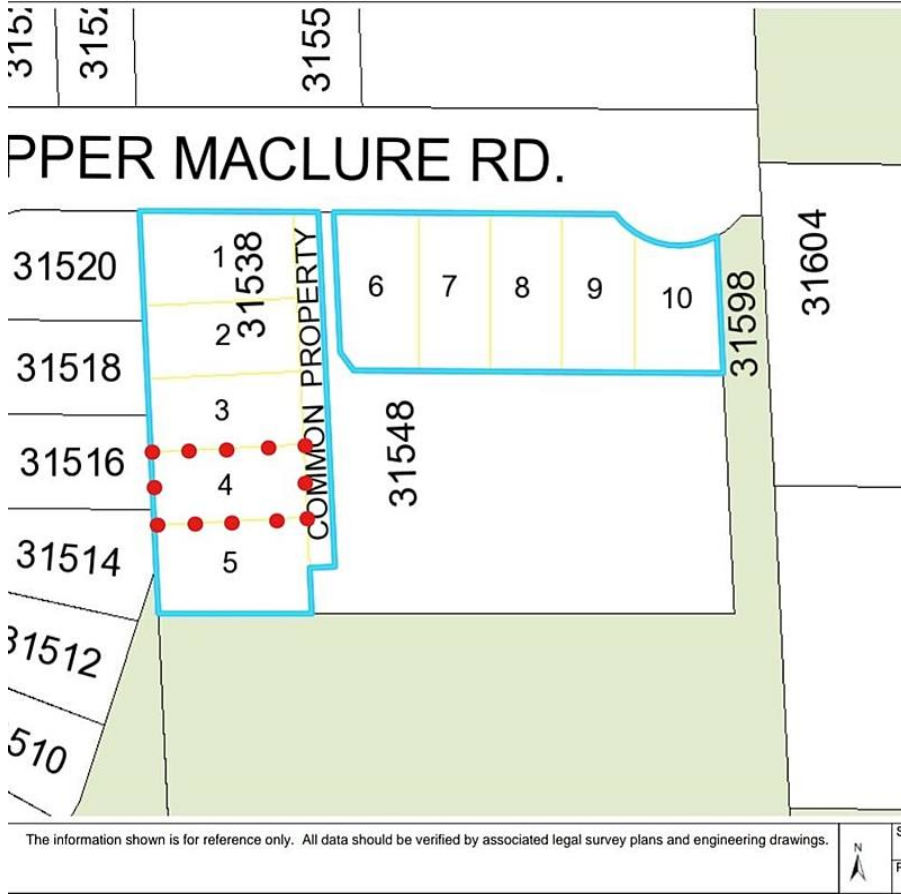


Lt.4 31538 Upper Maclure Road, Abbotsford

\$1,099,700



Building Lot! 4521 sqft Bare land strata lot in one of the most desirable locations of West Abbotsford. This subdivision offers some of the best views in Abbotsford. Services at lot line. Close to all levels of schools, parks, trails, public transit, restaurants, malls & easy access to Hwy. Buyer to check with the city for zoning & building requirements.

KEY INFORMATION

MLS® R2631309

Land Only

Abbotsford West

0 Bedrooms

0 Bathrooms

0 SF

4,521 SF Lot

FEATURES

Views: Mountains

Listed By: Sutton Group-West Coast Realty (Abbotsford)