

801 5288 Melbourne Street, Vancouver

\$380,000



First time home buyer alert! Well maintained studio in EMERALD PARK PLACE! This East facing home with spacious kitchen, In-suite Laundry and plenty of closet space is the perfect starter home. The location is impressive placing you with less than a 5 minute walk to Joyce Skytrain and all of the amenities you need, Transit will get you into downtown Vancouver within 15 minutes. Home comes with 1 Parking and 1 Storage!

KEY INFORMATION

MLS® R2632068

Residential Attached

Collingwood

1 Bedroom

1 Bathroom

437 SF

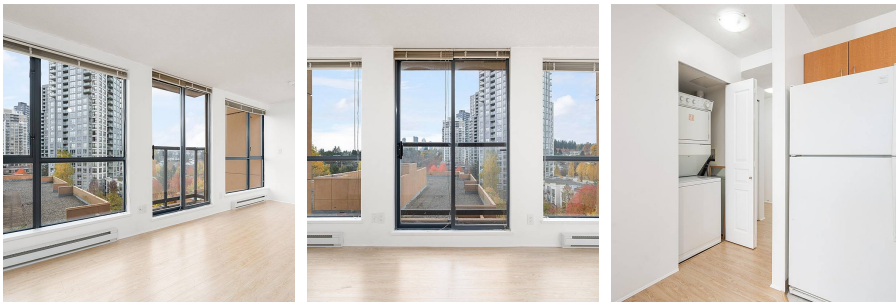
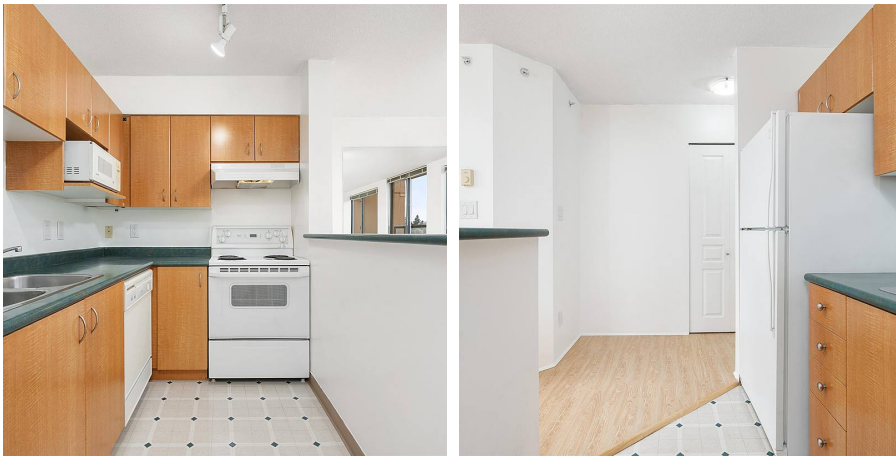
\$191.58 Maintenance Fees

FEATURES

Year Built: 1998

Views: East

Listed By: rennie & associates realty ltd.



Lorenzo Daminato PREC*

604.657.8121

ldaminato@rennie.com

rennie.com/lorenzodaminato

rennie