

20 2688 Mountain Highway, North Vancouver

\$1,298,900



Welcome to the townhomes at Craftsman Estates – One of Lynn Valley’s most sought after complexes steps from transit, shopping, library, schools & parks. Your MOVE IN READY, QUIET CORNER duplex-style townhome is tucked away from the busy street offering plenty of light with 3 side of windows. Main floor offers spacious living/ dining area, overheight ceilings, gas FP w/a reno'd Kitchen & powder rm. A separate eating area opens to a lrg patio perfect for entertaining & BBQ. Upstairs offers 2 large bdrms, reno'd bathrm with heated flrs & a master ensuite with separate bath/shower. Top floor offers a 3rd bdrm or an area perfect for an office. DIRECT ACCESS to pkg - 2 stalls (tandem) & a HUGE PRIVATE storage rm. Visitor pkg & car wash also avail. Open by Apt. Nov 19 4-6pm, Nov 20/21 2-4pm

KEY INFORMATION

MLS® R2633612

Residential Attached

Westlynn

3 Bedrooms

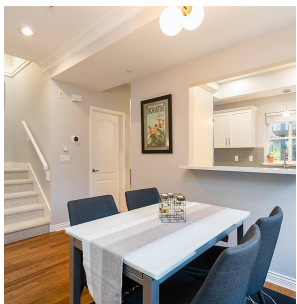
3 Bathrooms

1,677 SF

FEATURES

Year Built: 2003

Listed By: rennie & associates realty ltd.



Salina Kai PREC*
604.773.7013
skai@rennie.com
rennie.com/salinakai



Derek Kai PREC*
604.868.1666
dkai@rennie.com
rennie.com/derekkai

rennie