

467 Se Marine Drive, Vancouver

\$1,899,000



Conveniently located in the desirable neighbourhood of South Vancouver with a short walk to Pierre Elliott Trudeau Elementary. The home has quick access to retail amenities and services located along SE Marine Drive and the Fraser Street Corridor. This is a well maintained home with a number of updates throughout the years. The basement is currently tenant with stable income. Situated along SE Marine drive in close proximity to Fraser Street, this is a great property to hold with future development potential and good rental income.

KEY INFORMATION

MLS® R2633322

Residential Detached

South Vancouver

6 Bedrooms

3 Bathrooms

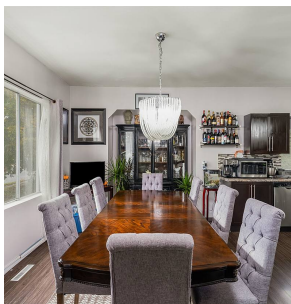
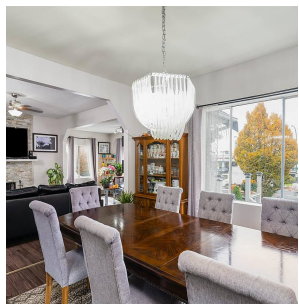
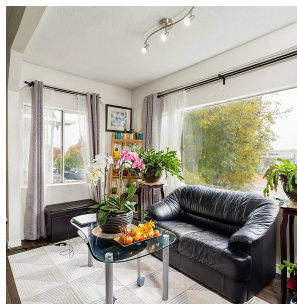
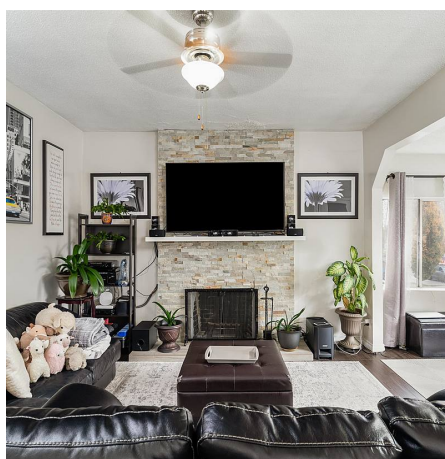
2,616 SF

4,967 SF Lot

FEATURES

Year Built: 1925

Listed By: rennie & associates realty ltd.



Jason Lai PREC*
778.996.1788
jlai@rennie.com
rennie.com/jasonlai

rennie