

13148 Huntley Avenue, Surrey

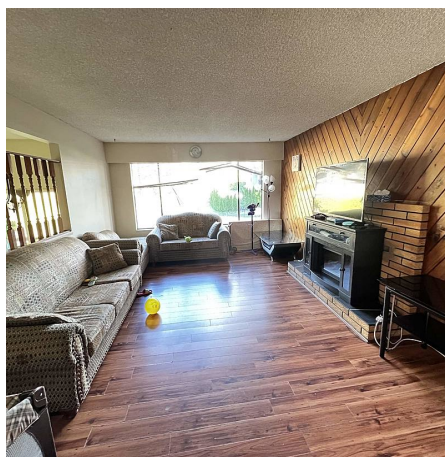
\$1,739,000



Rare Find, located in the heart of very desirable area of Surrey's Queen Mary Park. Prime location, steps away from elementary school, bus stop, close to shopping, all major highways, city Centre and sky train station and 4 mins drive from future UBC Campus. This home has three bedroom on the main floor, and two basements suites (1+1) one bed room each (great mortgage helper) Lot zoning is RF with the potential for a 3 story build (check with the city) LOT Size, 7196 Sq Feet. This is a great property for a beginners home, holding property, and to build your future dream home Will not last for too long. Fully tenanted property.

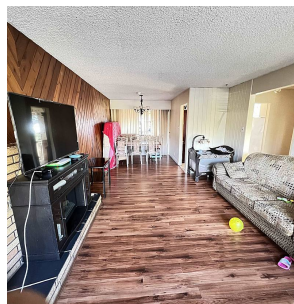
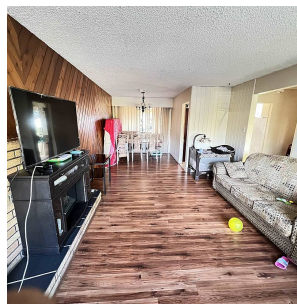
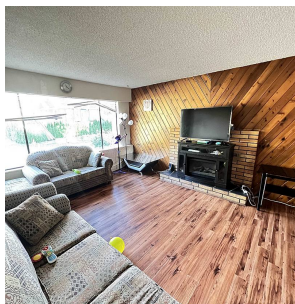
KEY INFORMATION

MLS® R2633747
Residential Detached
Queen Mary Park
5 Bedrooms
3 Bathrooms
2,228 SF
7,196 SF Lot



FEATURES

Year Built: 1973
Listed By: Sutton Group-West Coast Realty (Surrey/120)



rennie