

3003 13615 Fraser Highway, Surrey

\$699,000



Panoramic views captivate the eyes from this south west corner unit in the much anticipated King George Hub. Designated the second metropolitan core of Metro Vancouver, King George Hub residents will enjoy quick access to transportation, skytrain, restaurants and shops in this fast developing part of Central Surrey. A well appointed kitchen and a functional floorplan define this fantastic piece of property in BC's fastest growing city. Call your Realtor for your private showing today.

KEY INFORMATION

MLS® R2634053

Residential Attached

Whalley

2 Bedrooms

0 Bathrooms

837 SF

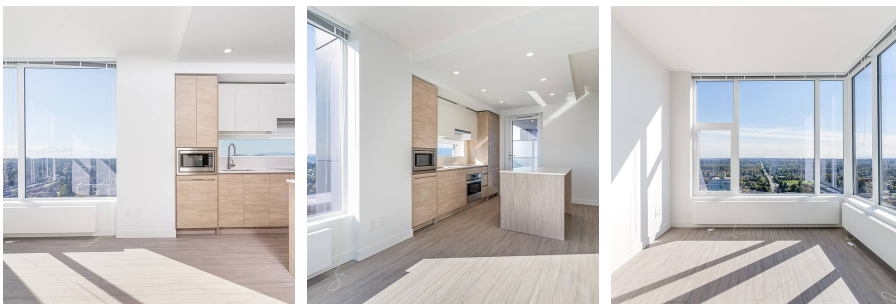
\$386.02 Maintenance Fees

FEATURES

Year Built: 2021

Views: City, Mountain and Greenery

Listed By: rennie & associates realty ltd.



Samson Danniels

778.989.2454

sdanniels@rennie.com

rennie.com/samsondanniels

rennie