

506 5687 Gray Avenue, Vancouver

\$1,220,000



Only two hundred meters from the Pacific Spirit Regional Park, this penthouse is located at the Wesbrook Village on UBC campus, surrounded by a impressive landscaping. With walking distance to parks, transportation, shopping centre, restaurants, banks, community centre, clinics and other facilities, you can enjoy the beautiful nature and the convenience of life at the same time. This appealing south facing unit has the feature of 11' high ceiling, matched with big windows and high efficiency heat pump. You will enjoy the gorgeous brightness and sunshine with comfortable temperature all year without cost. Besides a very functional layout, this unit has a gourmet modern kitchen with top brand appliances. Open house May 21, 22 2-4 pm.

KEY INFORMATION

MLS® R2634211

Residential Attached

University

2 Bedrooms

2 Bathrooms

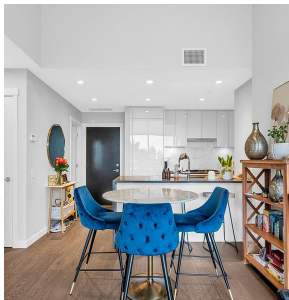
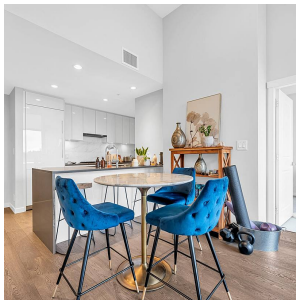
870 SF

\$393.22 Maintenance Fees

FEATURES

Year Built: 2019

Listed By: Luxmore Realty



rennie