

608 32838 Landeau Place, Abbotsford

\$429,900



NO GST! Lowest priced PENTHOUSE in COURT LIVING- set in the heart of Abbotsford's city centre, this top-floor penthouse with mountain views offers living in style. Inspired by contemporary architecture and Scandinavian design, the penthouse offers open concept floor plans featuring stainless steel appliances, polished quartz countertops, and modern cabinetry. This beautiful home is centrally located, steps from Canadian Super Store, Sevenoaks Shopping Centre and minutes from restaurants, playground, parks, library, grocery stores and schools along with the picturesque trails surrounding Mill Lake Park. Includes 2 parking stalls and 1 storage locker! Early completion possible. Easy to get access to public transit and highways.

KEY INFORMATION

MLS® R2634229

Residential Attached

Central Abbotsford

1 Bedroom

1 Bathroom

635 SF

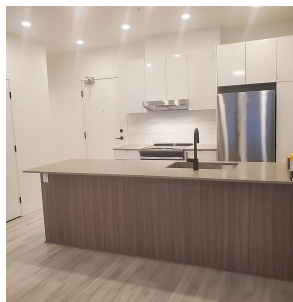
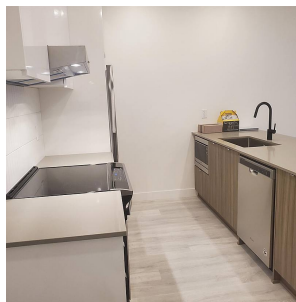
\$191.17 Maintenance Fees

FEATURES

Year Built: 2021

Views: MOUNTAINS

Listed By: Nationwide Realty Corp.



rennie