

# 501 4908 Cambie Street, Vancouver

\$1,399,000



SUB-PENTHOUSE SE CORNER home at Primrose! Newly completed in 2021, this architectural icon sits at the crest of Cambie Corridor designed by GBL Architects and landscaping by Hapa Collective. Located right next to Queen Elizabeth park with easy access to the Canada Line skytrain station, Oakridge Mall, with excellent school catchment area for all levels of education. Home 501 is 2 bed, 2 bath, 956sqft home that comes with parking, storage, and a private patios facing the Northshore mountains. Views of QE park from the master bedroom. Features: engineered oak hardwood floors, AC, Miele appliances, Binova Italian kitchens, Grohe Faucets, quartz countertops, and 2-5-10 warranty. View virtual tour in link! Book your private appt today.

## KEY INFORMATION

MLS® R2634823

Residential Attached

Cambie

2 Bedrooms

2 Bathrooms

956 SF

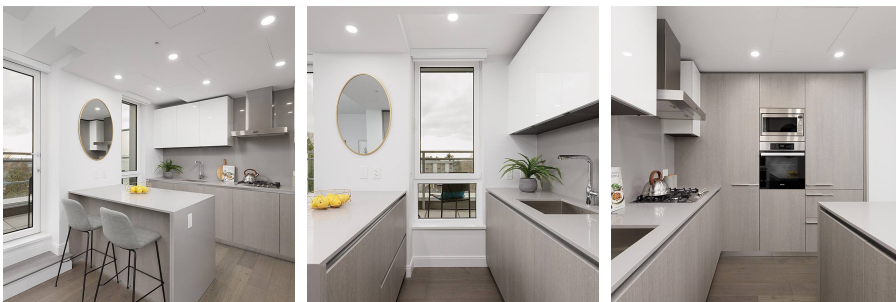
\$547.39 Maintenance Fees

## FEATURES

Year Built: 2021

Views: SE: Mountain Views

Listed By: rennie & associates realty ltd.



**Jane Chu** PREC\*  
778.886.3303  
janechu@rennie.com  
rennie.com/janechu

**rennie**