

1209 68 Smithe Street, Vancouver

\$1,488,000



Enjoy this 5 yr Stunning Residence with beautiful ocean view. South facing and one of the largest floor plans in the building. Central air conditioned. The building has world class amenities such as the beautiful glass bottom pool, hot tub & sauna and 24 Hr concierge service.

KEY INFORMATION

MLS® R2634876

Residential Attached

Downtown

2 Bedrooms

2 Bathrooms

1,009 SF

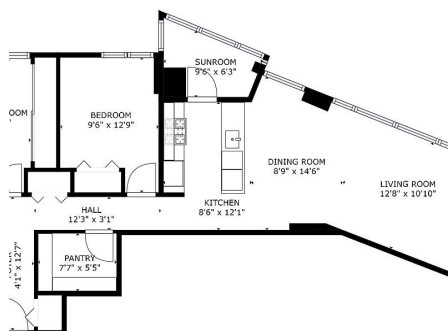
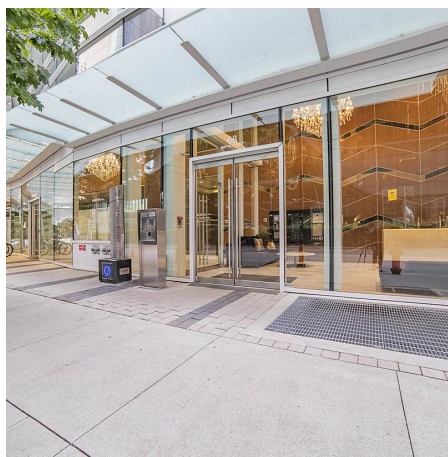
\$671.69 Maintenance Fees

FEATURES

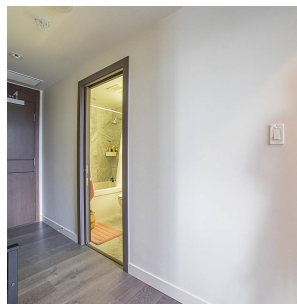
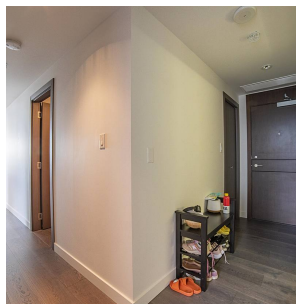
Year Built: 2016

Views: Ocean & False Creek

Listed By: Nu Stream Realty Inc.



1209 68 Smithe St Vancouver
1000 sq. ft. (1000 sq. ft.)
Total square feet includes common areas and is not intended to be used as a basis for comparison. Actual square feet may vary.



rennie