

# 1005 1455 Howe Street, Vancouver

\$1,860,000



Coveted SW Plan @ Pomaria. A floor plan of 1,250 sf which showcases views of False Creek, Granville Island, English Bay & beyond. 1st time being offered for sale since new & meticulous care is evident. The bedrms are configured w/ room separation & the master accommodates a king size bed & seating area. Geothermal cooling & heating provide year-round comfort. The kitchen is equipped w/ a 5-burner cook-top, centre island, s/s appliances, Sub Zero refrigeration & walk-in pantry. Bathrms are beautifully appointed & the master en-suite offers a spa-like retreat. 2 side x side parking stalls & 1 sto. locker. Building amenities incl a fitness area, meeting room, guest suite & 24hr concierge. Awarded the UDI Best High Rise when completed. A superb location & part of the Vancouver Beach District.

## KEY INFORMATION

MLS® R2635914

Residential Attached

Yaletown

2 Bedrooms

2 Bathrooms

1,250 SF

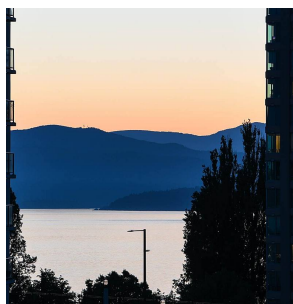
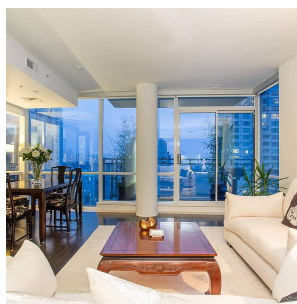
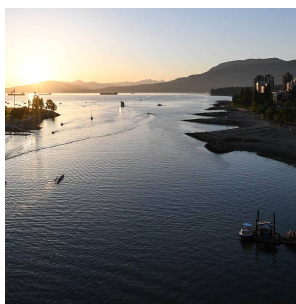
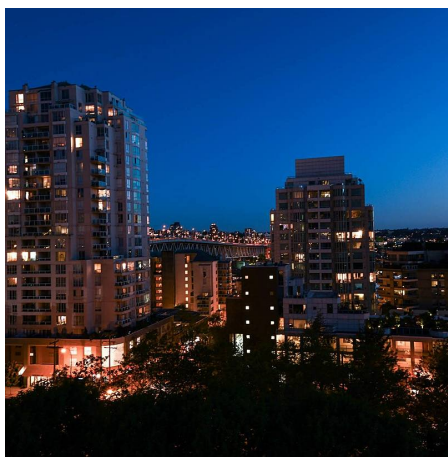
\$938.52 Maintenance Fees

## FEATURES

Year Built: 2007

Views: False Creek, Mountains, City

Listed By: Engel & Volkers Vancouver



rennie