

244 W Murphy Drive, Delta

\$1,399,000



Beautifully maintained and well loved one owner family home just minutes walk to Pebble Hill and Elementary School. This is the perfect home for a growing family with a spacious functional floor plan. Custom built with 4 bedrooms on the upper floor - oversized master with 2 closets (one walk in) and a full ensuite. 4th bedroom is size of a games room with finished attic storage. Dining room kitchen and family room overlook private manicured south facing garden with newer entertainment deck off dining and family area. Cedar shake roof (10 years), 2 fireplaces (wood burning & gas). Spacious flat lot with double car garage, lots of parking and room for RV or recreational vehicle. This home has everything a family could want and is in meticulous move in condition.

KEY INFORMATION

MLS® R2636167

Residential Detached

Pebble Hill

4 Bedrooms

3 Bathrooms

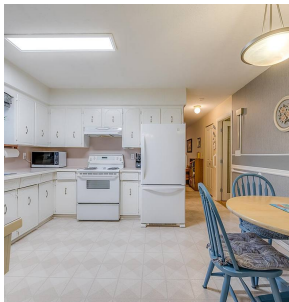
2,236 SF

7,761 SF Lot

FEATURES

Year Built: 1974

Listed By: Sutton Group Seafair Realty



rennie