

1165 Victoria Drive, Vancouver

\$1,499,000



Welcome to 'Victoria + William' designed by Ankenman Marchand Architects, 4 unique, contemporary townhomes just steps from Commercial Drive! These distinctive homes host spacious floor plans over ranging from 1,400 to 2,400 sqft, with a sleek neutral interior design package. Oversized windows & generous bedrooms host views spanning from the Northshore Mountains to Downtown Vancouver & Coal Harbor & are flooded with natural light. With a modern exterior surrounded by bamboo & greenery, this development is paving the way for tranquil yet contemporary living in a neighborhood rich with character and history. In this friendly community you will be sure to know your neighbors! Just blocks from Victoria Park, Schools, Transit & amazing restaurants!

KEY INFORMATION

MLS® R2636264

Residential Attached

Grandview Woodland

4 Bedrooms

4 Bathrooms

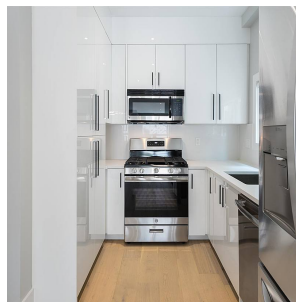
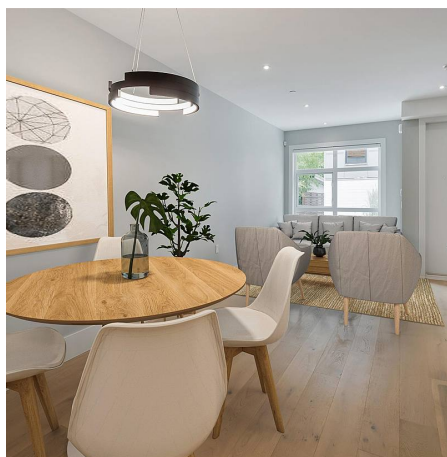
1,803 SF

FEATURES

Year Built: 2021

Views: City, Mountain, Water

Listed By: Angell, Hasman & Associates Realty Ltd.



rennie