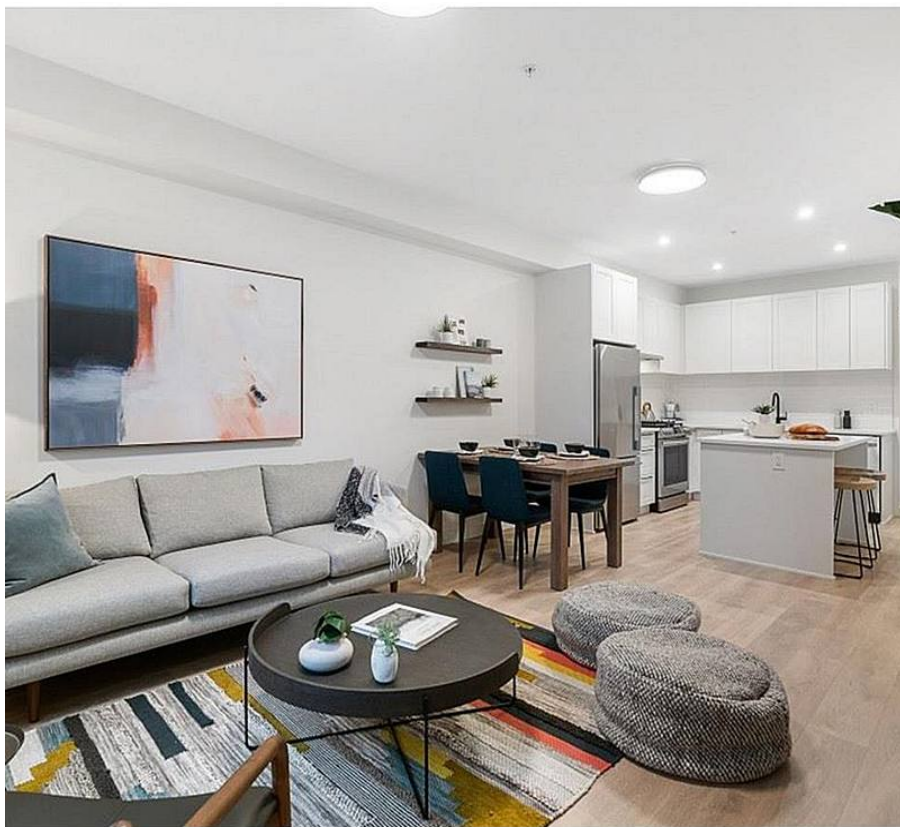


231 5415 Brydon Crescent, Langley

\$619,900



THE AUDLEY! This 2 bed & DEN, 2 bath home feat. Fisher & Paykel fridge, Samsung 5 burner GAS RANGE, freestanding island, framless glass shower and quartz counters throughout + Gas range. Dramatic ext. details incl. durable Hardiboard siding and brick. Energy efficient windows & glass doors. Entertain in style in the stunning landscaped courtyard feat: BBQ area, firepit, seating, children's play area and comm. garden. Over 3,100 sq. ft. of amenities incl: Fully equipped workout facility, yoga/meditation room, exec. boardroom, library/social room, study/quiet room, guest suite, workshop, dog wash and bike storage. Cent. location close to transit & FUTURE SKYTRAIN, shopping, restaurants & recreation

KEY INFORMATION

MLS® R2636340

Residential Attached

Langley City

2 Bedrooms

2 Bathrooms

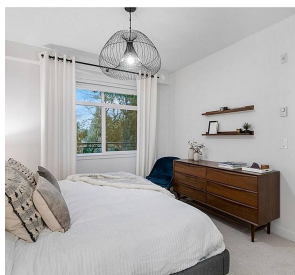
945 SF

\$250.43 Maintenance Fees

FEATURES

Year Built: 2021

Listed By: rennie & associates realty ltd.



Art Seroff PREC*
778.223.0033
aseroff@rennie.com
rennie.com/artseroff

rennie